

TAF6L Antibody
Purified Rabbit Polyclonal Antibody (Pab)
Catalog # AP51546**Specification**

TAF6L Antibody - Product Information

Application	WB
Primary Accession	O9Y6J9
Reactivity	Human, Mouse, Rat
Host	Rabbit
Clonality	Polyclonal
Calculated MW	68 KDa
Antigen Region	31 - 90

TAF6L Antibody - Additional Information**Gene ID** 10629**Other Names**

TAF6-like RNA polymerase II p300/CBP-associated factor-associated factor 65 kDa subunit 6L, PCAF-associated factor 65-alpha, PAF65-alpha, TAF6L, PAF65A

Target/Specificity

KLH conjugated synthetic peptide derived from human TAF6L

Dilution

WB~~ 1:1000

Format

0.01M PBS, pH 7.2, 0.09% (W/V) Sodium azide, Glycerol 50%

Storage

Store at -20 °C. Stable for 12 months from date of receipt

TAF6L Antibody - Protein Information**Name** TAF6L ([HGNC:17305](#))**Synonyms** PAF65A**Function**

Functions as a component of the PCAF complex. The PCAF complex is capable of efficiently acetylating histones in a nucleosomal context. The PCAF complex could be considered as the human version of the yeast SAGA complex (Probable). With TAF5L, acts as an epigenetic regulator essential for somatic reprogramming. Regulates target genes through H3K9ac deposition and MYC recruitment which trigger MYC regulatory network to orchestrate gene expression programs to control embryonic stem cell state. Functions with MYC to activate target gene expression through RNA polymerase II pause release (By similarity).

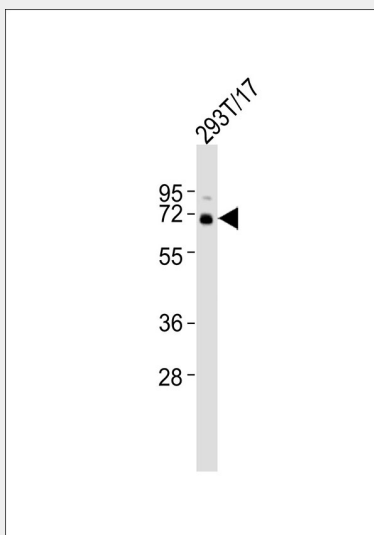
Cellular Location

Nucleus

TAF6L Antibody - Protocols

Provided below are standard protocols that you may find useful for product applications.

- [Western Blot](#)
- [Blocking Peptides](#)
- [Dot Blot](#)
- [Immunohistochemistry](#)
- [Immunofluorescence](#)
- [Immunoprecipitation](#)
- [Flow Cytometry](#)
- [Cell Culture](#)

TAF6L Antibody - Images

Anti-TAF6L Antibody at 1:1000 dilution + 293T/17 whole cell lysates. Lysates/proteins at 20 µg per lane. Secondary Goat Anti-Rabbit IgG, (H+L), Peroxidase conjugated at 1/10000 dilution. Predicted band size : 68 kDa. Blocking/Dilution buffer: 5% NFDM/TBST.

TAF6L Antibody - Background

Functions as a component of the PCAF complex. The PCAF complex is capable of efficiently acetylating histones in a nucleosomal context. The PCAF complex could be considered as the human version of the yeast SAGA complex.

TAF6L Antibody - References

- Ogryzko V.V., et al. *Cell* 94:35-44(1998).
Ota T., et al. *Nat. Genet.* 36:40-45(2004).
Mural R.J., et al. Submitted (JUL-2005) to the EMBL/GenBank/DDBJ databases.
Struhl K., et al. *Cell* 94:1-4(1998).
Martinez E., et al. *Mol. Cell. Biol.* 21:6782-6795(2001).