

Synaptophysin Antibody
Purified Rabbit Polyclonal Antibody (Pab)
Catalog # AP51545

Specification

Synaptophysin Antibody - Product Information

Application	WB
Primary Accession	P08247
Reactivity	Human, Mouse, Rat
Host	Rabbit
Clonality	Polyclonal
Calculated MW	38 KDa
Antigen Region	101 - 160

Synaptophysin Antibody - Additional Information

Gene ID 6855

Other Names

Synaptophysin, Major synaptic vesicle protein p38, SYP

Target/Specificity

KLH conjugated synthetic peptide derived from human Synaptophysin

Dilution

WB~~ 1:1000

Format

0.01M PBS, pH 7.2, 0.09% (W/V) Sodium azide, Glycerol 50%

Storage

Store at -20 °C. Stable for 12 months from date of receipt

Synaptophysin Antibody - Protein Information

Name SYP

Function

Possibly involved in structural functions as organizing other membrane components or in targeting the vesicles to the plasma membrane. Involved in the regulation of short-term and long-term synaptic plasticity (By similarity).

Cellular Location

Cytoplasmic vesicle, secretory vesicle, synaptic vesicle membrane; Multi-pass membrane protein. Synapse, synaptosome

Tissue Location

Expressed in the brain, with expression in the hippocampus, the neuropil in the dentate gyrus,

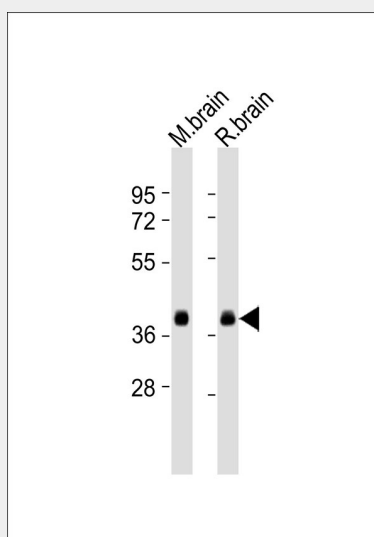
where expression is higher in the outer half of the molecular layer than in the inner half, and in the neuropil of CA4 and CA3 (PubMed:8838578). Expressed in the putamen (at protein level) (PubMed:17296554)

Synaptophysin Antibody - Protocols

Provided below are standard protocols that you may find useful for product applications.

- [Western Blot](#)
- [Blocking Peptides](#)
- [Dot Blot](#)
- [Immunohistochemistry](#)
- [Immunofluorescence](#)
- [Immunoprecipitation](#)
- [Flow Cytometry](#)
- [Cell Culture](#)

Synaptophysin Antibody - Images



All lanes : Anti-Synaptophysin Antibody at 1:1000 dilution Lane 1: mouse brain lysates Lane 2: rat brain lysates Lysates/proteins at 20 μ g per lane. Secondary Goat Anti-Rabbit IgG, (H+L), Peroxidase conjugated at 1/10000 dilution Predicted band size : 34 kDa Blocking/Dilution buffer: 5% NFDM/TBST.

Synaptophysin Antibody - Background

Possibly involved in structural functions as organizing other membrane components or in targeting the vesicles to the plasma membrane. Involved in the regulation of short-term and long-term synaptic plasticity (By similarity).

Synaptophysin Antibody - References

- Suedhof T.C., et al. *Nucleic Acids Res.* 15:9607-9607(1987).
Oezcelik T., et al. *Am. J. Hum. Genet.* 47:551-561(1990).
Fisher S.E., et al. *Genomics* 45:340-347(1997).
Ota T., et al. *Nat. Genet.* 36:40-45(2004).
Mural R.J., et al. Submitted (JUL-2005) to the EMBL/GenBank/DDBJ databases.

