

SNAP25 Antibody
Purified Rabbit Polyclonal Antibody (Pab)
Catalog # AP51530**Specification**

SNAP25 Antibody - Product Information

Application	WB
Primary Accession	P60880
Reactivity	Human, Mouse, Rat
Host	Rabbit
Clonality	Polyclonal
Calculated MW	25 KDa
Antigen Region	141 - 200

SNAP25 Antibody - Additional Information**Gene ID** 6616**Other Names**

Synaptosomal-associated protein 25, SNAP-25, Super protein, SUP, Synaptosomal-associated 25 kDa protein, SNAP25, SNAP

Target/Specificity

KLH conjugated synthetic peptide derived from human SNAP25

Dilution

WB~~ 1:1000

Format

0.01M PBS, pH 7.2, 0.09% (W/V) Sodium azide, Glycerol 50%

Storage

Store at -20 °C. Stable for 12 months from date of receipt

SNAP25 Antibody - Protein Information**Name** SNAP25**Synonyms** SNAP**Function**

t-SNARE involved in the molecular regulation of neurotransmitter release. May play an important role in the synaptic function of specific neuronal systems. Associates with proteins involved in vesicle docking and membrane fusion. Regulates plasma membrane recycling through its interaction with CENPF. Modulates the gating characteristics of the delayed rectifier voltage-dependent potassium channel KCNB1 in pancreatic beta cells.

Cellular Location

Cytoplasm, perinuclear region {ECO:0000250|UniProtKB:P60879}. Cell membrane {ECO:0000250|UniProtKB:P60881}; Lipid-anchor {ECO:0000250|UniProtKB:P60879}. Synapse, synaptosome {ECO:0000250|UniProtKB:P60879}. Photoreceptor inner segment {ECO:0000250|UniProtKB:P60879}. Note=Membrane association requires palmitoylation. Expressed throughout cytoplasm, concentrating at the perinuclear region. Colocalizes with KCNB1 at the cell membrane (By similarity). Colocalizes with PLCL1 at the cell membrane (By similarity). {ECO:0000250|UniProtKB:P60879, ECO:0000250|UniProtKB:P60881}

Tissue Location

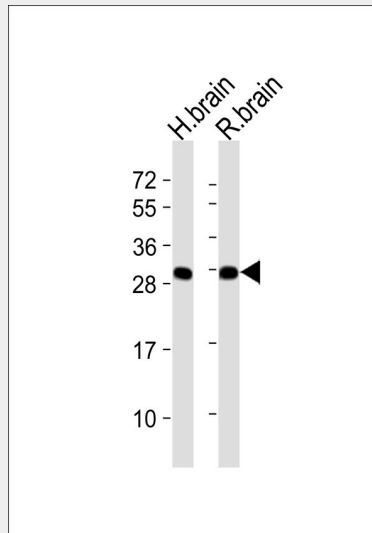
Neurons of the neocortex, hippocampus, piriform cortex, anterior thalamic nuclei, pontine nuclei, and granule cells of the cerebellum

SNAP25 Antibody - Protocols

Provided below are standard protocols that you may find useful for product applications.

- [Western Blot](#)
- [Blocking Peptides](#)
- [Dot Blot](#)
- [Immunohistochemistry](#)
- [Immunofluorescence](#)
- [Immunoprecipitation](#)
- [Flow Cytometry](#)
- [Cell Culture](#)

SNAP25 Antibody - Images



All lanes : Anti-SNAP25 Antibody at 1:1000 dilution Lane 1: human brain lysates Lane 2: rat brain lysates Lysates/proteins at 20 µg per lane. Secondary Goat Anti-Rabbit IgG, (H+L), Peroxidase conjugated at 1/10000 dilution Predicted band size : 23 kDa Blocking/Dilution buffer: 5% NFDM/TBST.

SNAP25 Antibody - Background

t-SNARE involved in the molecular regulation of neurotransmitter release. May play an important role in the synaptic function of specific neuronal systems. Associates with proteins involved in vesicle docking and membrane fusion. Regulates plasma membrane recycling through its

interaction with CENPF.

SNAP25 Antibody - References

Bark I.C., et al. Gene 139:291-292(1994).

Zhao N., et al. Gene 145:313-314(1994).

Jagadish M.N., et al. Biochem. J. 317:945-954(1996).

Kalnine N., et al. Submitted (OCT-2004) to the EMBL/GenBank/DDBJ databases.

Ota T., et al. Nat. Genet. 36:40-45(2004).