

RPS2 Antibody
Purified Rabbit Polyclonal Antibody (Pab)
Catalog # AP51489

Specification

RPS2 Antibody - Product Information

Application	WB
Primary Accession	P15880
Reactivity	Human, Mouse, Rat
Host	Rabbit
Clonality	Polyclonal
Calculated MW	31 KDa
Antigen Region	231 - 290

RPS2 Antibody - Additional Information

Gene ID 6187

Other Names

40S ribosomal protein S2, 40S ribosomal protein S4, Protein LLRep3, RPS2, RPS4

Target/Specificity

KLH conjugated synthetic peptide derived from human RPS2

Dilution

WB~~ 1:1000

Format

0.01M PBS, pH 7.2, 0.09% (W/V) Sodium azide, Glycerol 50%

Storage

Store at -20 °C. Stable for 12 months from date of receipt

RPS2 Antibody - Protein Information

Name RPS2

Synonyms RPS4

Function

Component of the ribosome, a large ribonucleoprotein complex responsible for the synthesis of proteins in the cell (PubMed: <http://www.uniprot.org/citations/23636399> target="_blank">23636399). The small ribosomal subunit (SSU) binds messenger RNAs (mRNAs) and translates the encoded message by selecting cognate aminoacyl-transfer RNA (tRNA) molecules (PubMed: <http://www.uniprot.org/citations/23636399> target="_blank">23636399). The large subunit (LSU) contains the ribosomal catalytic site termed the peptidyl transferase center (PTC), which catalyzes the formation of peptide bonds, thereby polymerizing the amino acids delivered by tRNAs into a polypeptide chain (PubMed: <http://www.uniprot.org/citations/23636399> target="_blank">23636399).

<http://www.uniprot.org/citations/23636399>). The nascent polypeptides leave the ribosome through a tunnel in the LSU and interact with protein factors that function in enzymatic processing, targeting, and the membrane insertion of nascent chains at the exit of the ribosomal tunnel (PubMed:<http://www.uniprot.org/citations/23636399>). Plays a role in the assembly and function of the 40S ribosomal subunit (By similarity). Mutations in this protein affects the control of translational fidelity (By similarity). Involved in nucleolar processing of pre-18S ribosomal RNA and ribosome assembly (By similarity).

Cellular Location

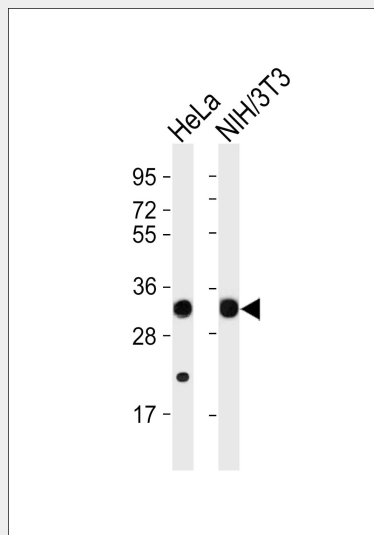
Cytoplasm. Nucleus, nucleolus. Note=Probably localized to nucleolus and cytoplasm in complex with ZNF277.

RPS2 Antibody - Protocols

Provided below are standard protocols that you may find useful for product applications.

- [Western Blot](#)
- [Blocking Peptides](#)
- [Dot Blot](#)
- [Immunohistochemistry](#)
- [Immunofluorescence](#)
- [Immunoprecipitation](#)
- [Flow Cytometry](#)
- [Cell Culture](#)

RPS2 Antibody - Images



All lanes : Anti-RPS2 Antibody at 1:1000 dilution Lane 1: HeLa whole cell lysates Lane 2: NIH/3T3 whole cell lysates Lysates/proteins at 20 µg per lane. Secondary Goat Anti-Rabbit IgG, (H+L), Peroxidase conjugated at 1/10000 dilution Predicted band size : 31 kDa Blocking/Dilution buffer: 5% NFDN/TBST.

RPS2 Antibody - References

Slynn G., et al. Nucleic Acids Res. 18:681-681(1990).
Ota T., et al. Nat. Genet. 36:40-45(2004).

Mural R.J.,et al.Submitted (SEP-2005) to the EMBL/GenBank/DDBJ databases.
Vladimirov S.N.,et al.Eur. J. Biochem. 239:144-149(1996).
Swiercz R.,et al.Biochem. J. 386:85-91(2005).