

RPL28 Antibody
Purified Rabbit Polyclonal Antibody (Pab)
Catalog # AP51484

Specification

RPL28 Antibody - Product Information

Application	WB
Primary Accession	P46779
Reactivity	Human
Host	Rabbit
Clonality	Polyclonal
Calculated MW	16 KDa
Antigen Region	21 - 80

RPL28 Antibody - Additional Information

Gene ID 6158

Other Names

60S ribosomal protein L28, RPL28

Target/Specificity

KLH conjugated synthetic peptide derived from human RPL28

Dilution

WB~~ 1:1000

Format

0.01M PBS, pH 7.2, 0.09% (W/V) Sodium azide, Glycerol 50%

Storage

Store at -20 °C. Stable for 12 months from date of receipt

RPL28 Antibody - Protein Information

Name RPL28

Function

Component of the large ribosomal subunit (PubMed: 12962325, PubMed: 23636399, PubMed: 32669547). The ribosome is a large ribonucleoprotein complex responsible for the synthesis of proteins in the cell (PubMed: 12962325, PubMed: 23636399, PubMed: 32669547).

Cellular Location

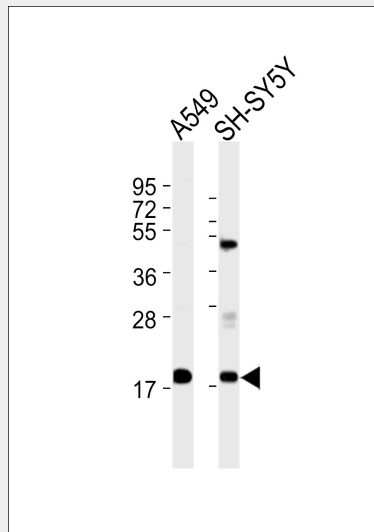
Cytoplasm.

RPL28 Antibody - Protocols

Provided below are standard protocols that you may find useful for product applications.

- [Western Blot](#)
- [Blocking Peptides](#)
- [Dot Blot](#)
- [Immunohistochemistry](#)
- [Immunofluorescence](#)
- [Immunoprecipitation](#)
- [Flow Cytometry](#)
- [Cell Culture](#)

RPL28 Antibody - Images



All lanes : Anti-RPL28 Antibody at 1:1000 dilution Lane 1: A549 whole cell lysates Lane 2: SH-SY5Y whole cell lysates Lysates/proteins at 20 µg per lane. Secondary Goat Anti-Rabbit IgG, (H+L), Peroxidase conjugated at 1/10000 dilution Predicted band size : 15 kDa Blocking/Dilution buffer: 5% NFDM/TBST.

RPL28 Antibody - References

- Frigerio J.-M., et al. *Biochim. Biophys. Acta* 1262:64-68(1995).
Ebert L., et al. Submitted (JUN-2004) to the EMBL/GenBank/DDBJ databases.
Ota T., et al. *Nat. Genet.* 36:40-45(2004).
Grimwood J., et al. *Nature* 428:529-535(2004).
Mural R.J., et al. Submitted (JUL-2005) to the EMBL/GenBank/DDBJ databases.