

RPL27A Antibody
Purified Rabbit Polyclonal Antibody (Pab)
Catalog # AP51483**Specification**

RPL27A Antibody - Product Information

Application	WB
Primary Accession	P46776
Reactivity	Human
Host	Rabbit
Clonality	Polyclonal
Calculated MW	17 KDa
Antigen Region	81 - 140

RPL27A Antibody - Additional Information**Gene ID** 6157**Other Names**

60S ribosomal protein L27a, RPL27A

Target/Specificity

KLH conjugated synthetic peptide derived from human RPL27A

Dilution

WB~~ 1:1000

Format

0.01M PBS, pH 7.2, 0.09% (W/V) Sodium azide, Glycerol 50%

Storage

Store at -20 °C. Stable for 12 months from date of receipt

RPL27A Antibody - Protein Information**Name** RPL27A**Function**

Component of the large ribosomal subunit (PubMed: 23636399, PubMed: 32669547). The ribosome is a large ribonucleoprotein complex responsible for the synthesis of proteins in the cell (PubMed: 23636399, PubMed: 32669547).

Cellular Location

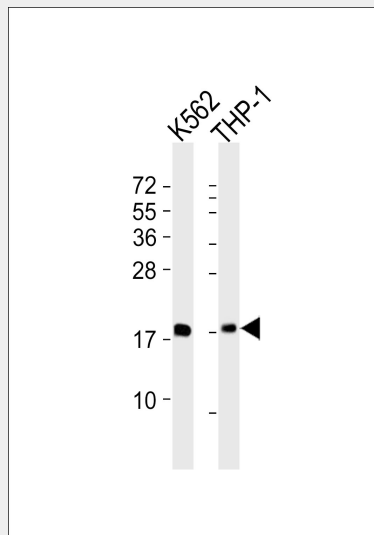
Cytoplasm.

RPL27A Antibody - Protocols

Provided below are standard protocols that you may find useful for product applications.

- [Western Blot](#)
- [Blocking Peptides](#)
- [Dot Blot](#)
- [Immunohistochemistry](#)
- [Immunofluorescence](#)
- [Immunoprecipitation](#)
- [Flow Cytometry](#)
- [Cell Culture](#)

RPL27A Antibody - Images



All lanes : Anti-RPL27A Antibody at 1:1000 dilution Lane 1: K562 whole cell lysates Lane 2: THP-1 whole cell lysates Lysates/proteins at 20 µg per lane. Secondary Goat Anti-Rabbit IgG, (H+L), Peroxidase conjugated at 1/10000 dilution Predicted band size : 17 kDa Blocking/Dilution buffer: 5% NFDM/TBST.

RPL27A Antibody - References

- Frigerio J.-M., et al. *Biochim. Biophys. Acta* 1262:64-68(1995).
Kusuda J., et al. *Cytogenet. Cell Genet.* 85:248-251(1999).
Ota T., et al. *Nat. Genet.* 36:40-45(2004).
Mural R.J., et al. Submitted (SEP-2005) to the EMBL/GenBank/DDBJ databases.
Kenmochi N., et al. *Genome Res.* 8:509-523(1998).