

RPL17 Antibody
Purified Rabbit Polyclonal Antibody (Pab)
Catalog # AP51482

Specification

RPL17 Antibody - Product Information

Application	WB
Primary Accession	P18621
Reactivity	Human, Mouse, Rat
Host	Rabbit
Clonality	Polyclonal
Calculated MW	22 KDa
Antigen Region	91 - 150

RPL17 Antibody - Additional Information

Gene ID 6139

Other Names

60S ribosomal protein L17, 60S ribosomal protein L23, PD-1, RPL17

Target/Specificity

KLH conjugated synthetic peptide derived from human RPL17

Dilution

WB~~ 1:1000

Format

0.01M PBS, pH 7.2, 0.09% (W/V) Sodium azide, Glycerol 50%

Storage

Store at -20 °C. Stable for 12 months from date of receipt

RPL17 Antibody - Protein Information

Name RPL17

Function

Component of the large ribosomal subunit (PubMed: 12962325, PubMed: 23636399, PubMed: 32669547). The ribosome is a large ribonucleoprotein complex responsible for the synthesis of proteins in the cell (PubMed: 12962325, PubMed: 23636399, PubMed: 32669547).

Cellular Location

Cytoplasm.

Tissue Location

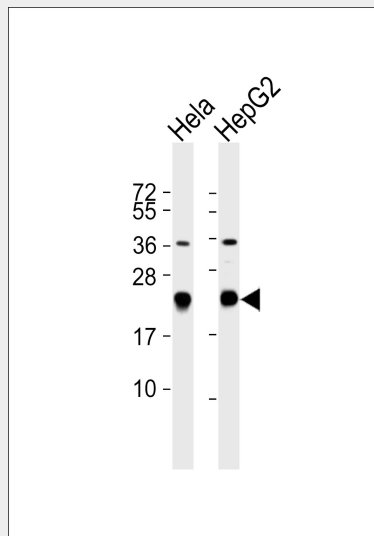
Expressed in pancreas, lung, colon, cystic duct, gall bladder, kidney and liver. Expressed at high levels in the well differentiated pancreatic tumor cell lines HPAF, COLO 357 and Capan-1, the moderately differentiated pancreatic tumor cell lines T3M-4, AsPc-1 and BxPc-3, the poorly differentiated pancreatic tumor cell line MIA PaCa-2, and the pancreatic tumor cell lines of undefined differentiation status such as SW979. Expressed at lower levels in the poorly differentiated pancreatic tumor cell lines HCG-25 and PANC-1

RPL17 Antibody - Protocols

Provided below are standard protocols that you may find useful for product applications.

- [Western Blot](#)
- [Blocking Peptides](#)
- [Dot Blot](#)
- [Immunohistochemistry](#)
- [Immunofluorescence](#)
- [Immunoprecipitation](#)
- [Flow Cytometry](#)
- [Cell Culture](#)

RPL17 Antibody - Images



All lanes : Anti-RPL17 Antibody at 1:1000 dilution Lane 1: HeLa whole cell lysates Lane 2: HepG2 whole cell lysates Lysates/proteins at 20 µg per lane. Secondary Goat Anti-Rabbit IgG, (H+L), Peroxidase conjugated at 1/10000 dilution Predicted band size : 21 kDa Blocking/Dilution buffer: 5% NFDm/TBST.

RPL17 Antibody - References

- Mager D.L., et al. Nucleic Acids Res. 18:5301-5301(1990).
Batra S.K., et al. Cell Growth Differ. 2:385-390(1991).
Yoshihama M., et al. Genome Res. 12:379-390(2002).
Ota T., et al. Nat. Genet. 36:40-45(2004).
Li W.B., et al. Submitted (MAR-2004) to the EMBL/GenBank/DDBJ databases.

