

OTUB2 Antibody
Purified Rabbit Polyclonal Antibody (Pab)
Catalog # AP51410

Specification

OTUB2 Antibody - Product Information

Application	WB
Primary Accession	O96DC9
Reactivity	Human, Mouse, Rat
Host	Rabbit
Clonality	Polyclonal
Calculated MW	27 KDa
Antigen Region	111 - 170

OTUB2 Antibody - Additional Information

Gene ID 78990

Other Names

Ubiquitin thioesterase OTUB2, Deubiquitinating enzyme OTUB2, OTU domain-containing ubiquitin aldehyde-binding protein 2, Otubain-2, Ubiquitin-specific-processing protease OTUB2, OTUB2, C14orf137, OTB2, OTU2

Target/Specificity

KLH conjugated synthetic peptide derived from human OTUB2

Dilution

WB~~ 1:1000

Format

0.01M PBS, pH 7.2, 0.09% (W/V) Sodium azide, Glycerol 50%

Storage

Store at -20 °C. Stable for 12 months from date of receipt

OTUB2 Antibody - Protein Information

Name OTUB2

Synonyms C14orf137, OTB2, OTU2

Function

Hydrolase that can remove conjugated ubiquitin from proteins in vitro and may therefore play an important regulatory role at the level of protein turnover by preventing degradation. Mediates deubiquitination of 'Lys-11-', 'Lys-48'- and 'Lys-63'-linked polyubiquitin chains, with a preference for 'Lys-63'-linked polyubiquitin chains.

Tissue Location

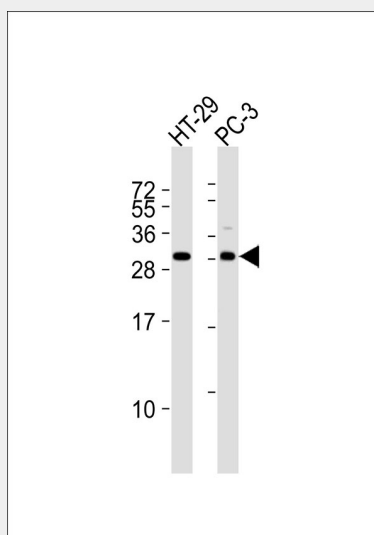
Widely expressed. Expressed at higher level in brain.

OTUB2 Antibody - Protocols

Provided below are standard protocols that you may find useful for product applications.

- [Western Blot](#)
- [Blocking Peptides](#)
- [Dot Blot](#)
- [Immunohistochemistry](#)
- [Immunofluorescence](#)
- [Immunoprecipitation](#)
- [Flow Cytometry](#)
- [Cell Culture](#)

OTUB2 Antibody - Images



All lanes : Anti-OTUB2 Antibody at 1:1000 dilution Lane 1: HT-29 whole cell lysates Lane 2: PC-3 whole cell lysates Lysates/proteins at 20 µg per lane. Secondary Goat Anti-Rabbit IgG, (H+L), Peroxidase conjugated at 1/10000 dilution Predicted band size : 27 kDa Blocking/Dilution buffer: 5% NFDM/TBST.

OTUB2 Antibody - Background

Hydrolase that can remove conjugated ubiquitin from proteins in vitro and may therefore play an important regulatory role at the level of protein turnover by preventing degradation. Mediates deubiquitination of 'Lys-11'-, 'Lys-48'- and 'Lys-63'- linked polyubiquitin chains, with a preference for 'Lys-63'-linked polyubiquitin chains.

OTUB2 Antibody - References

- Balakirev M.Y., et al. EMBO Rep. 4:517-522(2003).
Ota T., et al. Nat. Genet. 36:40-45(2004).
Ebert L., et al. Submitted (JUN-2004) to the EMBL/GenBank/DDBJ databases.
Heilig R., et al. Nature 421:601-607(2003).
Edelmann M.J., et al. Biochem. J. 418:379-390(2009).