

MMP15 Antibody
Purified Rabbit Polyclonal Antibody (Pab)
Catalog # AP51351

Specification

MMP15 Antibody - Product Information

Application	WB
Primary Accession	P51511
Reactivity	Human, Mouse, Rat
Host	Rabbit
Clonality	Polyclonal
Calculated MW	61 KDa
Antigen Region	91 - 150

MMP15 Antibody - Additional Information

Gene ID 4324

Other Names

Matrix metalloproteinase-15, MMP-15, 3424-, Membrane-type matrix metalloproteinase 2, MT-MMP 2, MTMMP2, Membrane-type-2 matrix metalloproteinase, MT2-MMP, MT2MMP, SMCP-2, MMP15

Target/Specificity

KLH conjugated synthetic peptide derived from human MMP15

Dilution

WB~~ 1:1000

Format

0.01M PBS, pH 7.2, 0.09% (W/V) Sodium azide, Glycerol 50%

Storage

Store at -20 °C. Stable for 12 months from date of receipt

MMP15 Antibody - Protein Information

Name MMP15

Function

Endopeptidase that degrades various components of the extracellular matrix. May activate progelatinase A.

Cellular Location

Membrane; Single-pass type I membrane protein; Extracellular side

Tissue Location

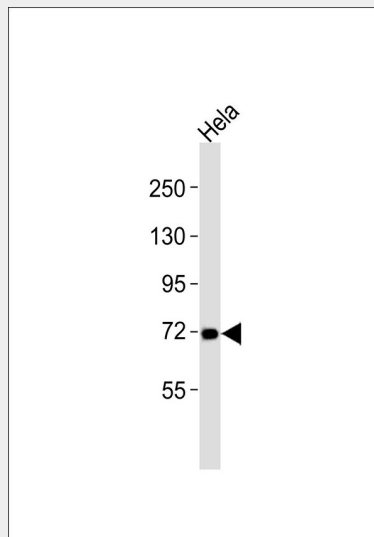
Appeared to be synthesized preferentially in liver, placenta, testis, colon and intestine. Substantial amounts are also detected in pancreas, kidney, lung, heart and skeletal muscle

MMP15 Antibody - Protocols

Provided below are standard protocols that you may find useful for product applications.

- [Western Blot](#)
- [Blocking Peptides](#)
- [Dot Blot](#)
- [Immunohistochemistry](#)
- [Immunofluorescence](#)
- [Immunoprecipitation](#)
- [Flow Cytometry](#)
- [Cell Culture](#)

MMP15 Antibody - Images



Anti-MMP15 Antibody at 1:1000 dilution + HeLa whole cell lysates Lysates/proteins at 20 µg per lane. Secondary Goat Anti-Rabbit IgG, (H+L), Peroxidase conjugated at 1/10000 dilution Predicted band size : 76 kDa Blocking/Dilution buffer: 5% NFDM/TBST.

MMP15 Antibody - Background

Endopeptidase that degrades various components of the extracellular matrix. May activate progelatinase A.

MMP15 Antibody - References

- Will H., et al. Eur. J. Biochem. 231:602-608(1995).
Sato H., et al. Genomics 39:412-413(1997).
Shofuda K., et al. Submitted (MAY-1996) to the EMBL/GenBank/DDBJ databases.
d'Ortho M.P., et al. Eur. J. Biochem. 250:751-757(1997).
Daub H., et al. Mol. Cell 31:438-448(2008).