

MMP14 Antibody
Purified Rabbit Polyclonal Antibody (Pab)
Catalog # AP51349**Specification**

MMP14 Antibody - Product Information

| | |
|-------------------|--------------------------|
| Application | WB |
| Primary Accession | P50281 |
| Reactivity | Human, Mouse, Rat |
| Host | Rabbit |
| Clonality | Polyclonal |
| Calculated MW | 63 KDa |
| Antigen Region | 481 - 540 |

MMP14 Antibody - Additional Information**Gene ID** 4323**Other Names**

Matrix metalloproteinase-14, MMP-14, MMP-X1, Membrane-type matrix metalloproteinase 1, MT-MMP 1, MTMMP1, Membrane-type-1 matrix metalloproteinase, MT1-MMP, MT1MMP, MMP14

Target/Specificity

KLH conjugated synthetic peptide derived from human MMP14

Dilution

WB~~ 1:1000

Format

0.01M PBS, pH 7.2, 0.09% (W/V) Sodium azide, Glycerol 50%

Storage

Store at -20 °C. Stable for 12 months from date of receipt

MMP14 Antibody - Protein Information**Name** MMP14**Function**

Endopeptidase that degrades various components of the extracellular matrix such as collagen (PubMed: [8015608](http://www.uniprot.org/citations/8015608)). Essential for pericellular collagenolysis and modeling of skeletal and extraskeletal connective tissues during development (By similarity). Activates progelatinase A/MMP2, thereby acting as a positive regulator of cell growth and migration (PubMed: [22065321](http://www.uniprot.org/citations/22065321), PubMed: [8015608](http://www.uniprot.org/citations/8015608)). Involved in the formation of the fibrovascular tissues in association with pro-MMP2 (PubMed: [12714657](http://www.uniprot.org/citations/12714657), PubMed: [12714657](http://www.uniprot.org/citations/12714657)).

<http://www.uniprot.org/citations/22065321> target="_blank">22065321). May be involved in actin cytoskeleton reorganization by cleaving PTK7 (PubMed:20837484). Acts as a regulator of Notch signaling by mediating cleavage and inhibition of DLL1 (PubMed:21572390). Cleaves ADGRB1 to release vasculostatin-40 which inhibits angiogenesis (PubMed:22330140). Acts as a negative regulator of the GDF15-GFRAL aversive response by mediating cleavage and inactivation of GFRAL (PubMed:35177851).

Cellular Location

Cell membrane; Single-pass type I membrane protein. Melanosome. Cytoplasm Note=Identified by mass spectrometry in melanosome fractions from stage I to stage IV (PubMed:17081065). Forms a complex with BST2 and localizes to the cytoplasm (PubMed:17081065)

Tissue Location

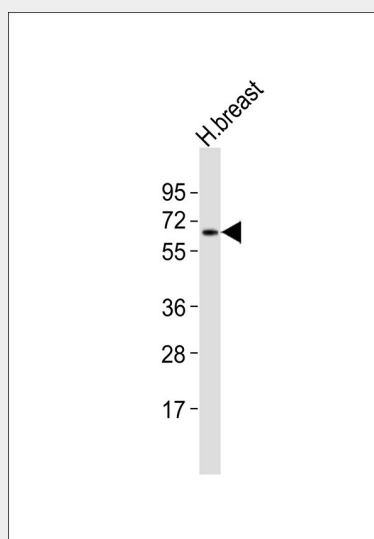
Expressed in stromal cells of colon, breast, and head and neck. Expressed in lung tumors.

MMP14 Antibody - Protocols

Provided below are standard protocols that you may find useful for product applications.

- [Western Blot](#)
- [Blocking Peptides](#)
- [Dot Blot](#)
- [Immunohistochemistry](#)
- [Immunofluorescence](#)
- [Immunoprecipitation](#)
- [Flow Cytometry](#)
- [Cell Culture](#)

MMP14 Antibody - Images



Anti-MMP14 Antibody at 1:1000 dilution + human breast lysates Lysates/proteins at 20 µg per lane. Secondary Goat Anti-Rabbit IgG, (H+L), Peroxidase conjugated at 1/10000 dilution Predicted band size : 66 kDa Blocking/Dilution buffer: 5% NFDM/TBST.

MMP14 Antibody - Background

Seems to specifically activate progelatinase A. May thus trigger invasion by tumor cells by activating progelatinase A on the tumor cell surface. May be involved in actin cytoskeleton reorganization by cleaving PTK7. Acts as a positive regulator of cell growth and migration via activation of MMP15.

MMP14 Antibody - References

- Sato H.,et al.Nature 370:61-65(1994).
Takino T.,et al.Gene 155:293-298(1995).
Okada A.,et al.Proc. Natl. Acad. Sci. U.S.A. 92:2730-2734(1995).
Will H.,et al.Eur. J. Biochem. 231:602-608(1995).
Luo G.-X.,et al.Submitted (NOV-1995) to the EMBL/GenBank/DDBJ databases.