

MMP1 Antibody
Purified Rabbit Polyclonal Antibody (Pab)
Catalog # AP51345**Specification**

MMP1 Antibody - Product Information

Application	WB
Primary Accession	P03956
Reactivity	Human, Mouse, Rat
Host	Rabbit
Clonality	Polyclonal
Calculated MW	52 KDa

MMP1 Antibody - Additional Information**Gene ID** 4312**Other Names**

Interstitial collagenase, Fibroblast collagenase, Matrix metalloproteinase-1, MMP-1, 22 kDa interstitial collagenase, 27 kDa interstitial collagenase, MMP1, CLG

Dilution

WB~~1:500

Format

0.01M PBS, pH 7.2, 0.09% (W/V) Sodium azide, Glycerol 50%

Storage

Store at -20 °C. Stable for 12 months from date of receipt

MMP1 Antibody - Protein Information**Name** MMP1**Synonyms** CLG**Function**

Cleaves collagens of types I, II, and III at one site in the helical domain. Also cleaves collagens of types VII and X (PubMed: <http://www.uniprot.org/citations/1645757> target="_blank">1645757, PubMed: <http://www.uniprot.org/citations/2153297> target="_blank">2153297, PubMed: <http://www.uniprot.org/citations/2557822> target="_blank">2557822). In case of HIV infection, interacts and cleaves the secreted viral Tat protein, leading to a decrease in neuronal Tat's mediated neurotoxicity (PubMed: <http://www.uniprot.org/citations/16807369> target="_blank">16807369).

Cellular Location

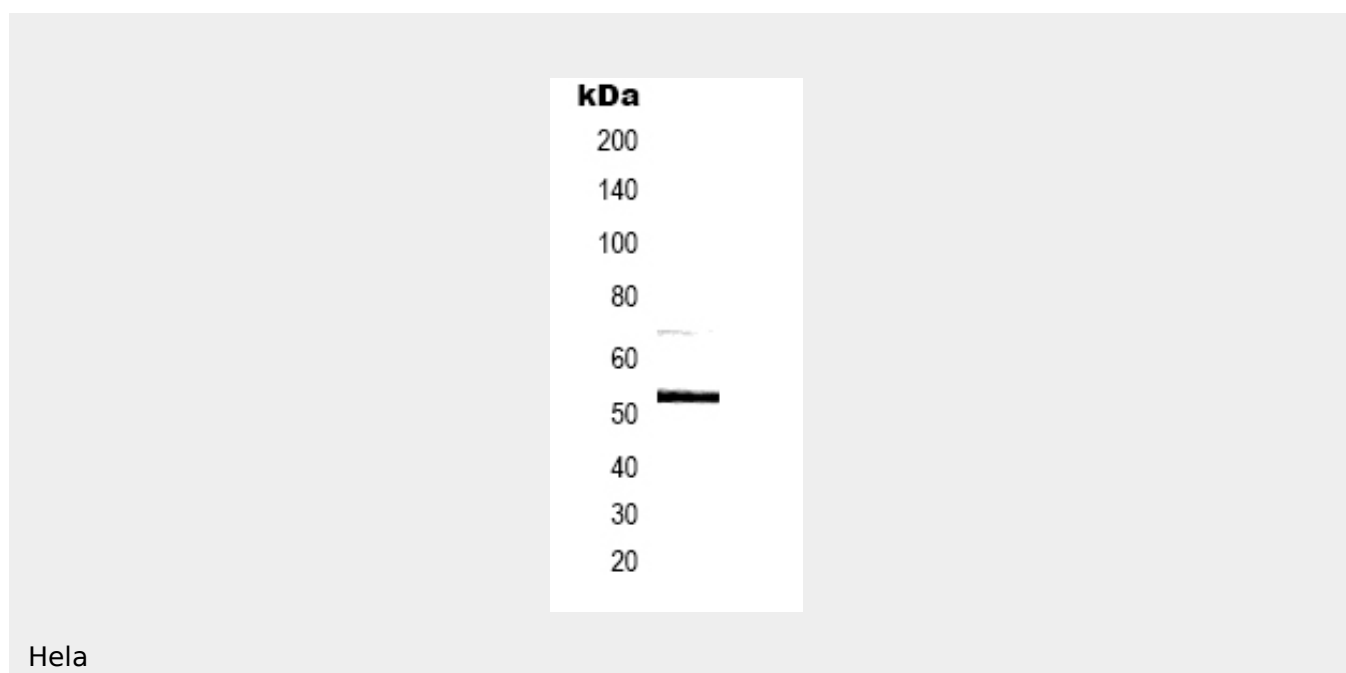
Secreted, extracellular space, extracellular matrix

MMP1 Antibody - Protocols

Provided below are standard protocols that you may find useful for product applications.

- [Western Blot](#)
- [Blocking Peptides](#)
- [Dot Blot](#)
- [Immunohistochemistry](#)
- [Immunofluorescence](#)
- [Immunoprecipitation](#)
- [Flow Cytometry](#)
- [Cell Culture](#)

MMP1 Antibody - Images



MMP1 Antibody - Background

Cleaves collagens of types I, II, and III at one site in the helical domain. Also cleaves collagens of types VII and X. In case of HIV infection, interacts and cleaves the secreted viral Tat protein, leading to a decrease in neuronal Tat's mediated neurotoxicity.

MMP1 Antibody - References

- Templeton N.S., et al. *Cancer Res.* 50:5431-5437(1990).
Whitham S.E., et al. *Biochem. J.* 240:913-916(1986).
Goldberg G.I., et al. *J. Biol. Chem.* 261:6600-6605(1986).
Lin D., et al. Submitted (DEC-1996) to the EMBL/GenBank/DDBJ databases.
Kalnine N., et al. Submitted (OCT-2004) to the EMBL/GenBank/DDBJ databases.