

**CD107a Antibody**  
**Purified Rabbit Polyclonal Antibody (Pab)**  
**Catalog # AP51313****Specification**

---

**CD107a Antibody - Product Information**

Application	<b>WB</b>
Primary Accession	<a href="#">P11279</a>
Reactivity	<b>Human</b>
Host	<b>Rabbit</b>
Clonality	<b>Polyclonal</b>
Calculated MW	<b>125 KDa</b>
Antigen Region	<b>101 - 160</b>

**CD107a Antibody - Additional Information****Gene ID** 3916**Other Names**

Lysosome-associated membrane glycoprotein 1, LAMP-1, Lysosome-associated membrane protein 1, CD107 antigen-like family member A, CD107a, LAMP1

**Target/Specificity**

KLH conjugated synthetic peptide derived from human CD107a

**Dilution**

WB~~ 1:1000

**Format**

0.01M PBS, pH 7.2, 0.09% (W/V) Sodium azide, Glycerol 50%

**Storage**

Store at -20 °C. Stable for 12 months from date of receipt

**CD107a Antibody - Protein Information****Name** LAMP1 {ECO:0000303|PubMed:23632890, ECO:0000312|HGNC:HGNC:6499}**Function**

Lysosomal membrane glycoprotein which plays an important role in lysosome biogenesis, lysosomal pH regulation, autophagy and cholesterol homeostasis (PubMed:<a href="http://www.uniprot.org/citations/37390818" target="\_blank">37390818</a>). Acts as an important regulator of lysosomal lumen pH regulation by acting as a direct inhibitor of the proton channel TMEM175, facilitating lysosomal acidification for optimal hydrolase activity (PubMed:<a href="http://www.uniprot.org/citations/37390818" target="\_blank">37390818</a>). Also plays an important role in NK-cells cytotoxicity (PubMed:<a href="http://www.uniprot.org/citations/2022921" target="\_blank">2022921</a>, PubMed:<a href="http://www.uniprot.org/citations/23632890" target="\_blank">23632890</a>).

Mechanistically, participates in cytotoxic granule movement to the cell surface and perforin trafficking to the lytic granule (PubMed:<a href="http://www.uniprot.org/citations/23632890" target="\_blank">23632890</a>). In addition, protects NK-cells from degranulation-associated damage induced by their own cytotoxic granule content (PubMed:<a href="http://www.uniprot.org/citations/23847195" target="\_blank">23847195</a>). Presents carbohydrate ligands to selectins (PubMed:<a href="http://www.uniprot.org/citations/7685349" target="\_blank">7685349</a>).

### Cellular Location

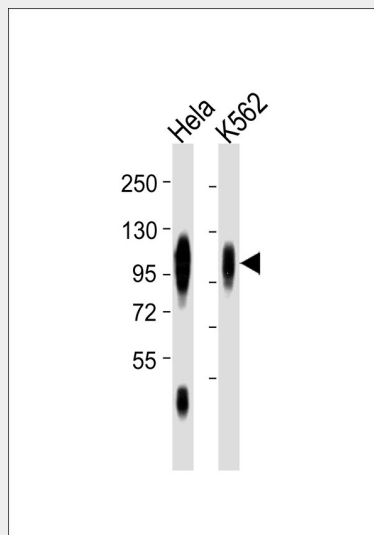
Lysosome membrane; Single-pass type I membrane protein. Endosome membrane; Single-pass type I membrane protein. Late endosome membrane; Single-pass type I membrane protein. Cell membrane; Single-pass type I membrane protein. Cytolytic granule membrane; Single-pass type I membrane protein. Note=This protein shuttles between lysosomes, endosomes, and the plasma membrane (By similarity). Colocalizes with OSBPL1A at the late endosome (PubMed:16176980). {ECO:0000250|UniProtKB:P05300, ECO:0000269|PubMed:16176980, ECO:0000269|PubMed:17897319}

### CD107a Antibody - Protocols

Provided below are standard protocols that you may find useful for product applications.

- [Western Blot](#)
- [Blocking Peptides](#)
- [Dot Blot](#)
- [Immunohistochemistry](#)
- [Immunofluorescence](#)
- [Immunoprecipitation](#)
- [Flow Cytometry](#)
- [Cell Culture](#)

### CD107a Antibody - Images



All lanes : Anti-CD107a Antibody at 1:1000 dilution Lane 1: HeLa whole cell lysates Lane 2: K562 whole cell lysates Lysates/proteins at 20 µg per lane. Secondary Goat Anti-Rabbit IgG, (H+L), Peroxidase conjugated at 1/10000 dilution Predicted band size : 45 kDa Blocking/Dilution buffer: 5% NFD/MTBST.

**CD107a Antibody - Background**

Presents carbohydrate ligands to selectins. Also implicated in tumor cell metastasis.

**CD107a Antibody - References**

Fukuda M., et al. J. Biol. Chem. 263:18920-18928(1988).

Dunham A., et al. Nature 428:522-528(2004).

Mural R.J., et al. Submitted (JUL-2005) to the EMBL/GenBank/DDBJ databases.

Mane S.M., et al. Arch. Biochem. Biophys. 268:360-378(1989).

Viitala J., et al. Proc. Natl. Acad. Sci. U.S.A. 85:3743-3747(1988).