

Cytokeratin 13 Antibody
Purified Rabbit Polyclonal Antibody (Pab)
Catalog # AP51306**Specification**

Cytokeratin 13 Antibody - Product Information

Application	WB
Primary Accession	P13646
Reactivity	Human
Host	Rabbit
Clonality	Polyclonal
Calculated MW	52 KDa
Antigen Region	241 - 300

Cytokeratin 13 Antibody - Additional Information**Gene ID** 3860**Other Names**

Keratin, type I cytoskeletal 13, Cytokeratin-13, CK-13, Keratin-13, K13, KRT13

Target/Specificity

KLH conjugated synthetic peptide derived from human Cytokeratin 13

Dilution

WB~~ 1:1000

Format

0.01M PBS, pH 7.2, 0.09% (W/V) Sodium azide, Glycerol 50%

Storage

Store at -20 °C. Stable for 12 months from date of receipt

Cytokeratin 13 Antibody - Protein Information**Name** KRT13**Function**

Type 1 keratin (Probable). Maintains postnatal tongue mucosal cell homeostasis and tissue organization in response to mechanical stress, potentially via regulation of the G1/S phase cyclins CCNE1 and CCNE2 (By similarity).

Tissue Location

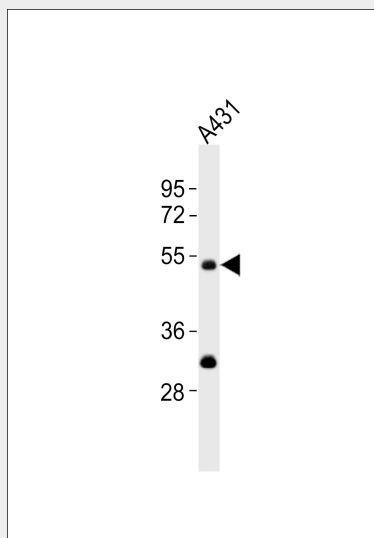
Expressed in some epidermal sweat gland ducts (at protein level) and in exocervix, esophagus and placenta

Cytokeratin 13 Antibody - Protocols

Provided below are standard protocols that you may find useful for product applications.

- [Western Blot](#)
- [Blocking Peptides](#)
- [Dot Blot](#)
- [Immunohistochemistry](#)
- [Immunofluorescence](#)
- [Immunoprecipitation](#)
- [Flow Cytometry](#)
- [Cell Culture](#)

Cytokeratin 13 Antibody - Images



Anti-Cytokeratin 13 Antibody at 1:1000 dilution + A431 whole cell lysates. Lysates/proteins at 20 μ g per lane. Secondary Goat Anti-Rabbit IgG, (H+L), Peroxidase conjugated at 1/10000 dilution. Predicted band size : 50,39,46 kDa. Blocking/Dilution buffer: 5% NFDM/TBST.

Cytokeratin 13 Antibody - References

- Schulz P., et al. *Biochem. Biophys. Res. Commun.* 162:1522-1527(1989).
Mischke D., et al. *Nucleic Acids Res.* 17:7984-7984(1989).
Kuruc N., et al. *Differentiation* 42:111-123(1989).
Waseem A., et al. *Gene* 215:269-279(1998).
Ota T., et al. *Nat. Genet.* 36:40-45(2004).