

KLF11 Antibody
Purified Rabbit Polyclonal Antibody (Pab)
Catalog # AP51301**Specification**

KLF11 Antibody - Product Information

Application	WB
Primary Accession	O14901
Reactivity	Human
Host	Rabbit
Clonality	Polyclonal
Calculated MW	55 KDa
Antigen Region	21 - 80

KLF11 Antibody - Additional Information**Gene ID** 8462**Other Names**

Krueppel-like factor 11, Transforming growth factor-beta-inducible early growth response protein 2, TGFB-inducible early growth response protein 2, TIEG-2, KLF11, FKLF, TIEG2

Target/Specificity

KLH conjugated synthetic peptide derived from human KLF11

Dilution

WB~~ 1:1000

Format

0.01M PBS, pH 7.2, 0.09% (W/V) Sodium azide, Glycerol 50%

Storage

Store at -20 °C. Stable for 12 months from date of receipt

KLF11 Antibody - Protein Information**Name** KLF11**Synonyms** FKLF, TIEG2**Function**

Transcription factor (PubMed: <http://www.uniprot.org/citations/10207080> target="_blank">10207080, PubMed: <http://www.uniprot.org/citations/9748269> target="_blank">9748269). Activates the epsilon- and gamma-globin gene promoters and, to a much lower degree, the beta-globin gene and represses promoters containing SP1-like binding inhibiting cell growth (PubMed: <http://www.uniprot.org/citations/10207080> target="_blank">10207080, PubMed: <http://www.uniprot.org/citations/16131492> target="_blank">16131492, PubMed: <http://www.uniprot.org/citations/9748269>

target="_blank">9748269). Represses transcription of SMAD7 which enhances TGF-beta signaling (By similarity). Induces apoptosis (By similarity).

Cellular Location

Nucleus.

Tissue Location

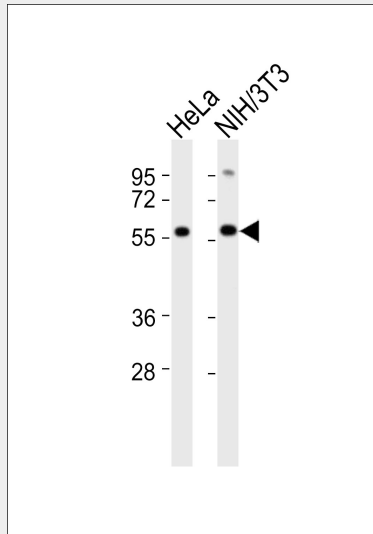
Ubiquitous. Higher expression in erythroid cells.

KLF11 Antibody - Protocols

Provided below are standard protocols that you may find useful for product applications.

- [Western Blot](#)
- [Blocking Peptides](#)
- [Dot Blot](#)
- [Immunohistochemistry](#)
- [Immunofluorescence](#)
- [Immunoprecipitation](#)
- [Flow Cytometry](#)
- [Cell Culture](#)

KLF11 Antibody - Images



All lanes : Anti-KLF11 Antibody at 1:1000 dilution Lane 1: HeLa whole cell lysates Lane 2: NIH/3T3 whole cell lysates Lysates/proteins at 20 µg per lane. Secondary Goat Anti-Rabbit IgG, (H+L), Peroxidase conjugated at 1/10000 dilution Predicted band size : 55 kDa Blocking/Dilution buffer: 5% NFDN/TBST.

KLF11 Antibody - Background

Transcription factor. Activates the epsilon- and gamma- globin gene promoters and, to a much lower degree, the beta-globin gene and represses promoters containing SP1-like binding inhibiting cell growth. Represses transcription of SMAD7 which enhances TGF-beta signaling. Induces apoptosis.

KLF11 Antibody - References

Cook T.,et al.J. Biol. Chem. 273:25929-25936(1998).
Asano H.,et al.Mol. Cell. Biol. 19:3571-3579(1999).
Schoy S.,et al.Genomics 70:93-101(2000).
Ota T.,et al.Nat. Genet. 36:40-45(2004).
Hillier L.W.,et al.Nature 434:724-731(2005).