

CD49e LC Antibody
Purified Rabbit Polyclonal Antibody (Pab)
Catalog # AP51289**Specification**

CD49e LC Antibody - Product Information

Application	WB
Primary Accession	P08648
Reactivity	Human, Mouse, Rat
Host	Rabbit
Clonality	Polyclonal
Calculated MW	18 KDa
Antigen Region	851 - 910

CD49e LC Antibody - Additional Information**Gene ID** 3678**Other Names**

Integrin alpha-5, CD49 antigen-like family member E, Fibronectin receptor subunit alpha, Integrin alpha-F, VLA-5, CD49e, Integrin alpha-5 heavy chain, Integrin alpha-5 light chain, ITGA5, FNRA

Target/Specificity

KLH conjugated synthetic peptide derived from human CD49e LC

Dilution

WB~~ 1:1000

Format

0.01M PBS, pH 7.2, 0.09% (W/V) Sodium azide, Glycerol 50%

Storage

Store at -20 °C. Stable for 12 months from date of receipt

CD49e LC Antibody - Protein Information**Name** ITGA5 ([HGNC:6141](#))**Synonyms** FNRA**Function**

Integrin alpha-5/beta-1 (ITGA5:ITGB1) is a receptor for fibronectin and fibrinogen. It recognizes the sequence R-G-D in its ligands. ITGA5:ITGB1 binds to PLA2G2A via a site (site 2) which is distinct from the classical ligand-binding site (site 1) and this induces integrin conformational changes and enhanced ligand binding to site 1 (PubMed: [18635536](http://www.uniprot.org/citations/18635536), PubMed: [25398877](http://www.uniprot.org/citations/25398877)). ITGA5:ITGB1 acts as a receptor for fibrillin-1 (FBN1) and mediates R-G-D-dependent cell adhesion to FBN1 (PubMed: 12807887, PubMed:17158881). ITGA5:ITGB1 acts as a receptor for fibronectin (FN1) and mediates R-G-D-dependent cell adhesion to FN1 (PubMed:33962943). ITGA5:ITGB1 is a receptor for IL1B and binding is essential for IL1B signaling (PubMed:29030430). ITGA5:ITGB3 is a receptor for soluble CD40LG and is required for CD40/CD40LG signaling (PubMed:31331973).

Cellular Location

Cell membrane; Single-pass type I membrane protein. Cell junction, focal adhesion

Tissue Location

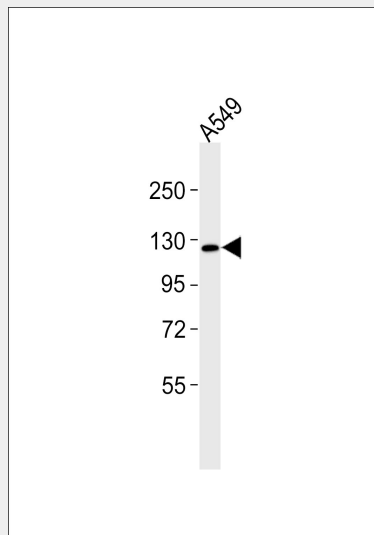
Expressed in placenta (at protein level).

CD49e LC Antibody - Protocols

Provided below are standard protocols that you may find useful for product applications.

- [Western Blot](#)
- [Blocking Peptides](#)
- [Dot Blot](#)
- [Immunohistochemistry](#)
- [Immunofluorescence](#)
- [Immunoprecipitation](#)
- [Flow Cytometry](#)
- [Cell Culture](#)

CD49e LC Antibody - Images



Anti-CD49e LC Antibody at 1:1000 dilution + A549 whole cell lysates Lysates/proteins at 20 µg per lane. Secondary Goat Anti-Rabbit IgG, (H+L), Peroxidase conjugated at 1/10000 dilution Predicted band size : 115 kDa Blocking/Dilution buffer: 5% NFDM/TBST.

CD49e LC Antibody - Background

Integrin alpha-5/beta-1 is a receptor for fibronectin and fibrinogen. It recognizes the sequence

R-G-D in its ligands. In case of HIV-1 infection, the interaction with extracellular viral Tat protein seems to enhance angiogenesis in Kaposi's sarcoma lesions.

CD49e LC Antibody - References

- Argaves W.S.,et al.J. Cell Biol. 105:1183-1190(1987).
Birkenmeier T.M.,et al.J. Biol. Chem. 266:20544-20549(1991).
Fitzgerald L.A.,et al.Biochemistry 26:8158-8165(1987).
Argaves W.S.,et al.J. Biol. Chem. 261:12922-12924(1986).
Takada Y.,et al.Proc. Natl. Acad. Sci. U.S.A. 84:3239-3243(1987).