

TUBB2C Antibody (Center)
Affinity Purified Rabbit Polyclonal Antibody (Pab)
Catalog # AP5126c

Specification

TUBB2C Antibody (Center) - Product Information

| | |
|-------------------|---|
| Application | WB, IHC-P,E |
| Primary Accession | P68371 |
| Other Accession | P09244 , Q91575 , P69897 , Q767L7 , P99024 , P07437 , P69893 , Q2KJD0 , P30883 , Q6P9T8 , P68372 , Q3MHM5 , P09206 , Q24560 |
| Reactivity | Human |
| Predicted | Drosophila, Chicken, Bovine, Mouse, Rat, Xenopus, Hamster, Pig |
| Host | Rabbit |
| Clonality | Polyclonal |
| Isotype | Rabbit IgG |
| Calculated MW | 49831 |
| Antigen Region | 99-125 |

TUBB2C Antibody (Center) - Additional Information

Gene ID 10383

Other Names

Tubulin beta-4B chain, Tubulin beta-2 chain, Tubulin beta-2C chain, TUBB4B, TUBB2C

Target/Specificity

This TUBB2C antibody is generated from rabbits immunized with a KLH conjugated synthetic peptide between 99-125 amino acids from the Central region of human TUBB2C.

Dilution

WB~~1:1000
IHC-P~~1:50~100

Format

Purified polyclonal antibody supplied in PBS with 0.09% (W/V) sodium azide. This antibody is purified through a protein A column, followed by peptide affinity purification.

Storage

Maintain refrigerated at 2-8°C for up to 2 weeks. For long term storage store at -20°C in small aliquots to prevent freeze-thaw cycles.

Precautions

TUBB2C Antibody (Center) is for research use only and not for use in diagnostic or therapeutic procedures.

TUBB2C Antibody (Center) - Protein Information

Name TUBB4B

Synonyms TUBB2C

Function Tubulin is the major constituent of microtubules, a cylinder consisting of laterally associated linear protofilaments composed of alpha- and beta-tubulin heterodimers. Microtubules grow by the addition of GTP-tubulin dimers to the microtubule end, where a stabilizing cap forms. Below the cap, tubulin dimers are in GDP-bound state, owing to GTPase activity of alpha-tubulin.

Cellular Location

Cytoplasm, cytoskeleton {ECO:0000250|UniProtKB:P68372}. Cytoplasm, cytoskeleton, flagellum axoneme {ECO:0000250|UniProtKB:P68372}

Tissue Location

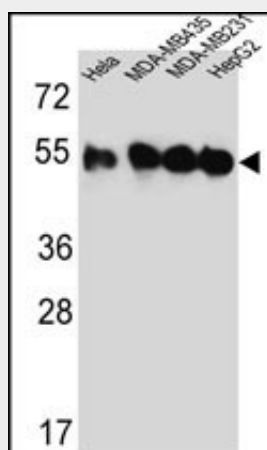
Ubiquitous..

TUBB2C Antibody (Center) - Protocols

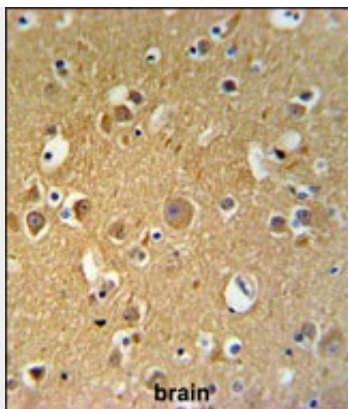
Provided below are standard protocols that you may find useful for product applications.

- [Western Blot](#)
- [Blocking Peptides](#)
- [Dot Blot](#)
- [Immunohistochemistry](#)
- [Immunofluorescence](#)
- [Immunoprecipitation](#)
- [Flow Cytometry](#)
- [Cell Culture](#)

TUBB2C Antibody (Center) - Images



Western blot analysis of TUBB2C Antibody (Center) (Cat. #AP5126c) in HeLa,MDA-MB435,MDA-MB231,HepG2 cell line lysates (35ug/lane). TUBB2C (arrow) was detected using the purified Pab.



TUBB2C Antibody (Center) (Cat. #AP5126c) IHC analysis in formalin fixed and paraffin embedded human brain tissue followed by peroxidase conjugation of the secondary antibody and DAB staining. This data demonstrates the use of the TUBB2C Antibody (Center) for immunohistochemistry. Clinical relevance has not been evaluated.

TUBB2C Antibody (Center) - Background

TUBB2C is the major constituent of microtubules. It binds two moles of GTP, one at an exchangeable site on the beta chain and one at a non-exchangeable site on the alpha-chain.

TUBB2C Antibody (Center) - References

Xu, W., et al. Mol. Cancer Ther. 8(12):3318-3330(2009)
Chan, C.M., et al. Arch. Pathol. Lab. Med. 132(4):675-683(2008)
Olsen, J.V., et al. Cell 127(3):635-648(2006)