

**GRP94 Antibody**  
**Purified Rabbit Polyclonal Antibody (Pab)**  
**Catalog # AP51268**

**Specification**

---

**GRP94 Antibody - Product Information**

Application	<b>WB</b>
Primary Accession	<a href="#">P14625</a>
Reactivity	<b>Human</b>
Host	<b>Rabbit</b>
Clonality	<b>Polyclonal</b>
Calculated MW	<b>94 KDa</b>
Antigen Region	<b>741 - 800</b>

**GRP94 Antibody - Additional Information**

**Gene ID** 7184

**Other Names**

Endoplasmic, 94 kDa glucose-regulated protein, GRP-94, Heat shock protein 90 kDa beta member 1, Tumor rejection antigen 1, gp96 homolog, HSP90B1, GRP94, TRA1

**Target/Specificity**

KLH conjugated synthetic peptide derived from human GRP94

**Dilution**

WB~~ 1:1000

**Format**

0.01M PBS, pH 7.2, 0.09% (W/V) Sodium azide, Glycerol 50%

**Storage**

Store at -20 °C. Stable for 12 months from date of receipt

**GRP94 Antibody - Protein Information**

**Name** HSP90B1 ([HGNC:12028](#))

**Function**

Molecular chaperone that functions in the processing and transport of secreted proteins (By similarity). When associated with CNPY3, required for proper folding of Toll-like receptors (By similarity). Functions in endoplasmic reticulum associated degradation (ERAD) (PubMed:<a href="http://www.uniprot.org/citations/18264092" target="\_blank">18264092</a>). Has ATPase activity (By similarity). May participate in the unfolding of cytosolic leaderless cargos (lacking the secretion signal sequence) such as the interleukin 1/IL-1 to facilitate their translocation into the ERGIC (endoplasmic reticulum- Golgi intermediate compartment) and secretion; the translocation process is mediated by the cargo receptor TMED10 (PubMed:<a href="http://www.uniprot.org/citations/32272059" target="\_blank">32272059</a>).

### Cellular Location

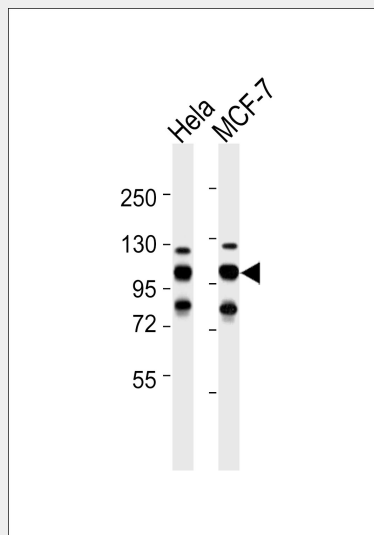
Endoplasmic reticulum lumen. Sarcoplasmic reticulum lumen {ECO:0000250|UniProtKB:P41148}.  
Melanosome Note=Identified by mass spectrometry in melanosome fractions from stage I to stage IV.

### GRP94 Antibody - Protocols

Provided below are standard protocols that you may find useful for product applications.

- [Western Blot](#)
- [Blocking Peptides](#)
- [Dot Blot](#)
- [Immunohistochemistry](#)
- [Immunofluorescence](#)
- [Immunoprecipitation](#)
- [Flow Cytometry](#)
- [Cell Culture](#)

### GRP94 Antibody - Images



All lanes : Anti-GRP94 Antibody at 1:1000 dilution Lane 1: HeLa whole cell lysates Lane 2: MCF-7 whole cell lysates Lysates/proteins at 20 µg per lane. Secondary Goat Anti-Rabbit IgG, (H+L), Peroxidase conjugated at 1/10000 dilution Predicted band size : 92 kDa Blocking/Dilution buffer: 5% NFDM/TBST.

### GRP94 Antibody - Background

Molecular chaperone that functions in the processing and transport of secreted proteins. When associated with CNPY3, required for proper folding of Toll-like receptors (By similarity). Functions in endoplasmic reticulum associated degradation (ERAD). Has ATPase activity.

### GRP94 Antibody - References

- Maki R.G., et al. Proc. Natl. Acad. Sci. U.S.A. 87:5658-5662(1990).  
Chang S.C., et al. Mol. Cell. Biol. 9:2153-2162(1989).  
Meng S., et al. Submitted (JUN-2001) to the EMBL/GenBank/DDBJ databases.  
Gevaert K., et al. Nat. Biotechnol. 21:566-569(2003).

Meunier L., et al. Mol. Biol. Cell 13:4456-4469(2002).