

**hnRNP A1 Antibody**  
**Purified Rabbit Polyclonal Antibody (Pab)**  
**Catalog # AP51259**

**Specification**

---

**hnRNP A1 Antibody - Product Information**

Application	WB
Primary Accession	<a href="#">P09651</a>
Reactivity	Human, Mouse, Rat
Host	Rabbit
Clonality	Polyclonal
Calculated MW	39, 34, 29 KDa
Antigen Region	61 - 120

**hnRNP A1 Antibody - Additional Information**

**Gene ID** 3178

**Other Names**

Heterogeneous nuclear ribonucleoprotein A1, hnRNP A1, Helix-destabilizing protein, Single-strand RNA-binding protein, hnRNP core protein A1, Heterogeneous nuclear ribonucleoprotein A1, N-terminally processed, HNRNPA1, HNRPA1

**Target/Specificity**

KLH conjugated synthetic peptide derived from human hnRNP A1

**Dilution**

WB~~ 1:1000

**Format**

0.01M PBS, pH 7.2, 0.09% (W/V) Sodium azide, Glycerol 50%

**Storage**

Store at -20 °C. Stable for 12 months from date of receipt

**hnRNP A1 Antibody - Protein Information**

**Name** HNRNPA1

**Synonyms** HNRPA1

**Function**

Involved in the packaging of pre-mRNA into hnRNP particles, transport of poly(A) mRNA from the nucleus to the cytoplasm and modulation of splice site selection (PubMed:<a href="http://www.uniprot.org/citations/17371836" target="\_blank">17371836</a>). Plays a role in the splicing of pyruvate kinase PKM by binding repressively to sequences flanking PKM exon 9, inhibiting exon 9 inclusion and resulting in exon 10 inclusion and production of the PKM M2 isoform (PubMed:<a href="http://www.uniprot.org/citations/20010808" target="\_blank">20010808</a>).

Binds to the IRES and thereby inhibits the translation of the apoptosis protease activating factor APAF1 (PubMed:<a href="http://www.uniprot.org/citations/31498791" target="\_blank">31498791</a>). May bind to specific miRNA hairpins (PubMed:<a href="http://www.uniprot.org/citations/28431233" target="\_blank">28431233</a>).

#### Cellular Location

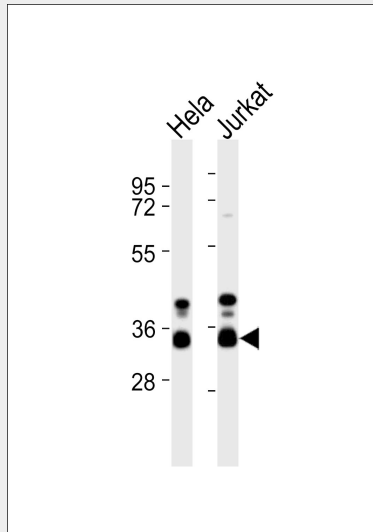
Nucleus. Cytoplasm Note=Localized in cytoplasmic mRNP granules containing untranslated mRNAs. Shuttles continuously between the nucleus and the cytoplasm along with mRNA. Component of ribonucleosomes (PubMed:17289661) Nucleus. Note=(Microbial infection) SARS coronavirus-2/SARS-CoV-2 ORF6 protein increases accumulation to the nucleus.

#### hnRNP A1 Antibody - Protocols

Provided below are standard protocols that you may find useful for product applications.

- [Western Blot](#)
- [Blocking Peptides](#)
- [Dot Blot](#)
- [Immunohistochemistry](#)
- [Immunofluorescence](#)
- [Immunoprecipitation](#)
- [Flow Cytometry](#)
- [Cell Culture](#)

#### hnRNP A1 Antibody - Images



All lanes : Anti-hnRNP A1 Antibody at 1:1000 dilution Lane 1: HeLa whole cell lysates Lane 2: Jurkat whole cell lysates Lysates/proteins at 20 µg per lane. Secondary Goat Anti-Rabbit IgG, (H+L), Peroxidase conjugated at 1/10000 dilution Predicted band size : 39 kDa Blocking/Dilution buffer: 5% NFDN/TBST.

#### hnRNP A1 Antibody - Background

Involved in the packaging of pre-mRNA into hnRNP particles, transport of poly(A) mRNA from the nucleus to the cytoplasm and may modulate splice site selection. May play a role in HCV RNA replication.

**hnRNP A1 Antibody - References**

- Biamonti G., et al. J. Mol. Biol. 207:491-503(1989).  
Buvoli M., et al. Nucleic Acids Res. 16:3751-3770(1988).  
Knudsen S.M., et al. Submitted (JUN-1994) to the EMBL/GenBank/DDBJ databases.  
Ota T., et al. Nat. Genet. 36:40-45(2004).  
Scherer S.E., et al. Nature 440:346-351(2006).