

GUCY1A3 Antibody
Purified Rabbit Polyclonal Antibody (Pab)
Catalog # AP51251

Specification

GUCY1A3 Antibody - Product Information

Application	WB
Primary Accession	Q02108
Reactivity	Human
Host	Rabbit
Clonality	Polyclonal
Calculated MW	77 KDa
Antigen Region	381 - 440

GUCY1A3 Antibody - Additional Information

Gene ID 2982

Other Names

Guanylate cyclase soluble subunit alpha-3, GCS-alpha-3, GCS-alpha-1, Soluble guanylate cyclase large subunit, GUCY1A3, GUC1A3, GUCSA3, GUCY1A1

Target/Specificity

KLH conjugated synthetic peptide derived from human GUCY1A3

Dilution

WB~~ 1:1000

Format

0.01M PBS, pH 7.2, 0.09% (W/V) Sodium azide, Glycerol 50%

Storage

Store at -20 °C. Stable for 12 months from date of receipt

GUCY1A3 Antibody - Protein Information

Name GUCY1A1 ([HGNC:4685](#))

Cellular Location

Cytoplasm.

Tissue Location

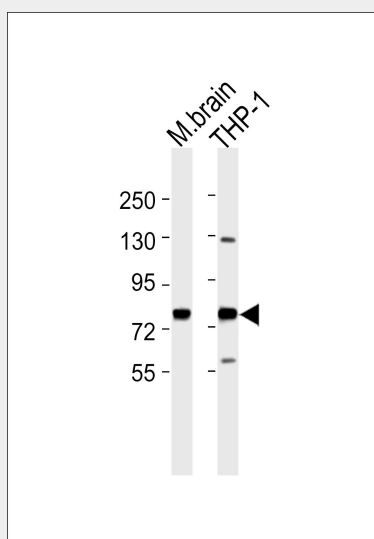
Detected in brain cortex and lung (at protein level).

GUCY1A3 Antibody - Protocols

Provided below are standard protocols that you may find useful for product applications.

- [Western Blot](#)
- [Blocking Peptides](#)
- [Dot Blot](#)
- [Immunohistochemistry](#)
- [Immunofluorescence](#)
- [Immunoprecipitation](#)
- [Flow Cytometry](#)
- [Cell Culture](#)

GUCY1A3 Antibody - Images



All lanes : Anti-GUCY1A3 Antibody at 1:1000 dilution Lane 1: M.brain tissue lysates Lane 2: THP-1 whole cell lysates Lysates/proteins at 20 µg per lane. Secondary Goat Anti-Rabbit IgG, (H+L), Peroxidase conjugated at 1/10000 dilution Predicted band size : 77 kDa Blocking/Dilution buffer: 5% NFD/MTBST.

GUCY1A3 Antibody - References

- Giulli G., et al. FEBS Lett. 304:83-88(1992).
Gansemans Y., et al. Submitted (MAY-1996) to the EMBL/GenBank/DDBJ databases.
Zabel U., et al. Biochem. J. 335:51-57(1998).
Ota T., et al. Nat. Genet. 36:40-45(2004).
Hillier L.W., et al. Nature 434:724-731(2005).