

Glutamine Synthetase Antibody
Purified Rabbit Polyclonal Antibody (Pab)
Catalog # AP51233

Specification

Glutamine Synthetase Antibody - Product Information

Application	WB
Primary Accession	P15104
Reactivity	Human, Mouse, Rat
Host	Rabbit
Clonality	Polyclonal
Calculated MW	49 KDa
Antigen Region	201 - 260

Glutamine Synthetase Antibody - Additional Information

Gene ID 2752

Other Names

Glutamine synthetase, GS, Glutamate decarboxylase, Glutamate--ammonia ligase, GLUL, GLNS

Target/Specificity

KLH conjugated synthetic peptide derived from human Glutamine Synthetase

Dilution

WB~~ 1:4000

Format

0.01M PBS, pH 7.2, 0.09% (W/V) Sodium azide, Glycerol 50%

Storage

Store at -20 °C. Stable for 12 months from date of receipt

Glutamine Synthetase Antibody - Protein Information

Name GLUL {ECO:0000303|PubMed:30158707, ECO:0000312|HGNC:HGNC:4341}

Function

Glutamine synthetase that catalyzes the ATP-dependent conversion of glutamate and ammonia to glutamine (PubMed: [16267323](http://www.uniprot.org/citations/16267323) target="_blank">16267323, PubMed: [30158707](http://www.uniprot.org/citations/30158707) target="_blank">30158707, PubMed: [36289327](http://www.uniprot.org/citations/36289327) target="_blank">36289327). Its role depends on tissue localization: in the brain, it regulates the levels of toxic ammonia and converts neurotoxic glutamate to harmless glutamine, whereas in the liver, it is one of the enzymes responsible for the removal of ammonia (By similarity). Essential for proliferation of fetal skin fibroblasts (PubMed: [18662667](http://www.uniprot.org/citations/18662667) target="_blank">18662667). Independently of its glutamine synthetase activity, required for endothelial cell migration during

vascular development: acts by regulating membrane localization and activation of the GTPase RHOJ, possibly by promoting RHOJ palmitoylation (PubMed:30158707). May act as a palmitoyltransferase for RHOJ: able to autopalmitoylate and then transfer the palmitoyl group to RHOJ (PubMed:30158707). Plays a role in ribosomal 40S subunit biogenesis (PubMed:26711351). Through the interaction with BEST2, inhibits BEST2 channel activity by affecting the gating at the aperture in the absence of intracellular L-glutamate, but sensitizes BEST2 to intracellular L-glutamate, which promotes the opening of BEST2 and thus relieves its inhibitory effect on BEST2 (PubMed:36289327).

Cellular Location

Cytoplasm, cytosol. Microsome {ECO:0000250|UniProtKB:P09606} Mitochondrion {ECO:0000250|UniProtKB:P09606}. Cell membrane; Lipid-anchor. Note=Mainly localizes in the cytosol, with a fraction associated with the cell membrane

Tissue Location

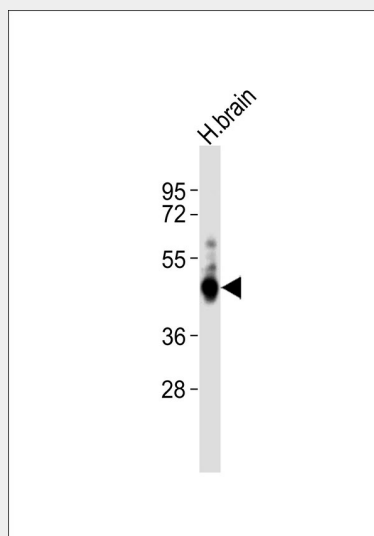
Expressed in endothelial cells.

Glutamine Synthetase Antibody - Protocols

Provided below are standard protocols that you may find useful for product applications.

- [Western Blot](#)
- [Blocking Peptides](#)
- [Dot Blot](#)
- [Immunohistochemistry](#)
- [Immunofluorescence](#)
- [Immunoprecipitation](#)
- [Flow Cytometry](#)
- [Cell Culture](#)

Glutamine Synthetase Antibody - Images



Anti-Glutamine Synthetase Antibody at 1:4000 dilution + human brain lysates Lysates/proteins at 20 µg per lane. Secondary Goat Anti-Rabbit IgG, (H+L), Peroxidase conjugated at 1/10000 dilution

Predicted band size : 42 kDa Blocking/Dilution buffer: 5% NFDM/TBST.

Glutamine Synthetase Antibody - Background

This enzyme has 2 functions: it catalyzes the production of glutamine and 4-aminobutanoate (gamma-aminobutyric acid, GABA), the latter in a pyridoxal phosphate-independent manner (By similarity). Essential for proliferation of fetal skin fibroblasts.

Glutamine Synthetase Antibody - References

Gibbs C.S.,et al.Nucleic Acids Res. 15:6293-6293(1987).
van den Hoff M.J.B.,et al.Biochim. Biophys. Acta 1090:249-251(1991).
Christa L.,et al.Gastroenterology 106:1312-1320(1994).
Haberle J.,et al.Submitted (NOV-2003) to the EMBL/GenBank/DDBJ databases.
Bechtel S.,et al.BMC Genomics 8:399-399(2007).