

Endothelin A Receptor Antibody
Purified Rabbit Polyclonal Antibody (Pab)
Catalog # AP51176

Specification

Endothelin A Receptor Antibody - Product Information

Application	WB
Primary Accession	P25101
Reactivity	Human
Host	Rabbit
Clonality	Polyclonal
Calculated MW	49 KDa
Antigen Region	361 - 420

Endothelin A Receptor Antibody - Additional Information

Gene ID 1909

Other Names

Endothelin-1 receptor, Endothelin A receptor, ET-A, ETA-R, hET-AR, EDNRA, ETA, ETRA

Target/Specificity

KLH conjugated synthetic peptide derived from human Endothelin A Receptor

Dilution

WB~~ 1:1000

Format

0.01M PBS, pH 7.2, 0.09% (W/V) Sodium azide, Glycerol 50%

Storage

Store at -20 °C. Stable for 12 months from date of receipt

Endothelin A Receptor Antibody - Protein Information

Name EDNRA ([HGNC:3179](#))

Synonyms ETA, ETRA

Function

Receptor for endothelin-1. Mediates its action by association with G proteins that activate a phosphatidylinositol-calcium second messenger system. The rank order of binding affinities for ET-A is: ET1 > ET2 >> ET3.

Cellular Location

Cell membrane; Multi-pass membrane protein.

Tissue Location

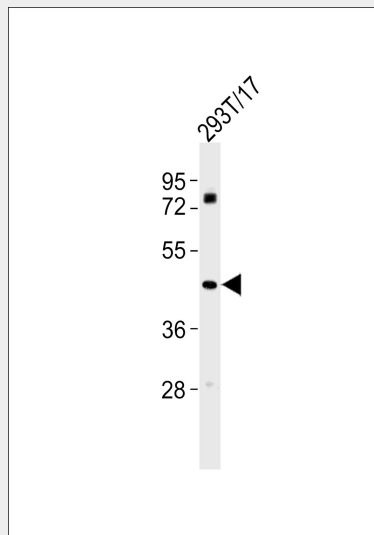
Isoform 1, isoform 3 and isoform 4 are expressed in a variety of tissues, with highest levels in the aorta and cerebellum, followed by lung, atrium and cerebral cortex, lower levels in the placenta, kidney, adrenal gland, duodenum, colon, ventricle and liver but no expression in umbilical vein endothelial cells. Within the placenta, isoform 1, isoform 2, isoform 3 and isoform 4 are expressed in the villi and stem villi vessels.

Endothelin A Receptor Antibody - Protocols

Provided below are standard protocols that you may find useful for product applications.

- [Western Blot](#)
- [Blocking Peptides](#)
- [Dot Blot](#)
- [Immunohistochemistry](#)
- [Immunofluorescence](#)
- [Immunoprecipitation](#)
- [Flow Cytometry](#)
- [Cell Culture](#)

Endothelin A Receptor Antibody - Images



Anti-Endothelin A Receptor Antibody at 1:1000 dilution + 293T/17 whole cell lysates. Lysates/proteins at 20 µg per lane. Secondary Goat Anti-Rabbit IgG, (H+L), Peroxidase conjugated at 1/10000 dilution. Predicted band size : 49,36,24 kDa. Blocking/Dilution buffer: 5% NFD/MTBST.

Endothelin A Receptor Antibody - Background

Receptor for endothelin-1. Mediates its action by association with G proteins that activate a phosphatidylinositol- calcium second messenger system. The rank order of binding affinities for ET-A is: ET1 > ET2 >> ET3.

Endothelin A Receptor Antibody - References

- Adachi M., et al. *Biochem. Biophys. Res. Commun.* 180:1265-1272(1991).
Cyr C., et al. *Biochem. Biophys. Res. Commun.* 181:184-190(1991).
Hosoda K., et al. *FEBS Lett.* 287:23-26(1991).
Arai H., et al. *Jpn. Circ. J.* 56:1303-1307(1992).

Elshourbagy N.A., et al. J. Biol. Chem. 268:3873-3879(1993).