

Dopamine Receptor D4 Antibody
Purified Rabbit Polyclonal Antibody (Pab)
Catalog # AP51169

Specification

Dopamine Receptor D4 Antibody - Product Information

| | |
|-------------------|------------------------|
| Application | WB |
| Primary Accession | P21917 |
| Reactivity | Human, Mouse, Rat |
| Host | Rabbit |
| Clonality | Polyclonal |
| Calculated MW | 48 KDa |
| Antigen Region | 341 - 400 |

Dopamine Receptor D4 Antibody - Additional Information

Gene ID 1815

Other Names

D(4) dopamine receptor, D(2C) dopamine receptor, Dopamine D4 receptor, DRD4

Target/Specificity

KLH conjugated synthetic peptide derived from human Dopamine Receptor D4

Dilution

WB~~ 1:1000

Format

0.01M PBS, pH 7.2, 0.09% (W/V) Sodium azide, Glycerol 50%

Storage

Store at -20 °C. Stable for 12 months from date of receipt

Dopamine Receptor D4 Antibody - Protein Information

Name DRD4

Function

Dopamine receptor responsible for neuronal signaling in the mesolimbic system of the brain, an area of the brain that regulates emotion and complex behavior. Activated by dopamine, but also by epinephrine and norepinephrine, and by numerous synthetic agonists and drugs (PubMed: [16423344](http://www.uniprot.org/citations/16423344), PubMed: [27659709](http://www.uniprot.org/citations/27659709), PubMed: [29051383](http://www.uniprot.org/citations/29051383), PubMed: [9003072](http://www.uniprot.org/citations/9003072)). Agonist binding triggers signaling via G proteins that inhibit adenylyl cyclase (PubMed: [16423344](http://www.uniprot.org/citations/16423344), PubMed: [27659709](http://www.uniprot.org/citations/27659709), PubMed: [27659709](http://www.uniprot.org/citations/27659709), PubMed: [27659709](http://www.uniprot.org/citations/27659709)).

[29051383](http://www.uniprot.org/citations/29051383), PubMed:<[7512953](http://www.uniprot.org/citations/7512953)>, PubMed:<[7643093](http://www.uniprot.org/citations/7643093)>). Modulates the circadian rhythm of contrast sensitivity by regulating the rhythmic expression of NPAS2 in the retinal ganglion cells (By similarity).

Cellular Location

Cell membrane; Multi-pass membrane protein

Tissue Location

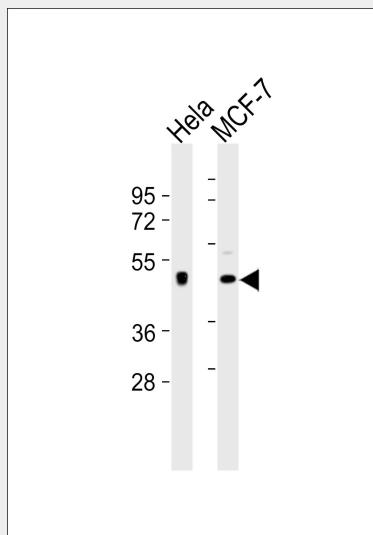
Highly expressed in retina. Detected at much lower levels in brain, in amygdala, thalamus, hypothalamus, cerebellum and pituitary.

Dopamine Receptor D4 Antibody - Protocols

Provided below are standard protocols that you may find useful for product applications.

- [Western Blot](#)
- [Blocking Peptides](#)
- [Dot Blot](#)
- [Immunohistochemistry](#)
- [Immunofluorescence](#)
- [Immunoprecipitation](#)
- [Flow Cytometry](#)
- [Cell Culture](#)

Dopamine Receptor D4 Antibody - Images



All lanes : Anti-Dopamine Receptor D4 Antibody at 1:1000 dilution Lane 1: HeLa whole cell lysates Lane 2: MCF-7 whole cell lysates Lysates/proteins at 20 µg per lane. Secondary Goat Anti-Rabbit IgG, (H+L), Peroxidase conjugated at 1/10000 dilution Predicted band size : 48 kDa Blocking/Dilution buffer: 5% NFDM/TBST.

Dopamine Receptor D4 Antibody - Background

Dopamine receptor responsible for neuronal signaling in the mesolimbic system of the brain, an area of the brain that regulates emotion and complex behavior. Its activity is mediated by G

proteins which inhibit adenylyl cyclase.

Dopamine Receptor D4 Antibody - References

van Tol H.H., et al. Nature 358:149-152(1992).

van Tol H.H.M., et al. Nature 350:610-614(1991).

Suwa M., et al. Submitted (JUL-2001) to the EMBL/GenBank/DDBJ databases.

Kaighin V.A., et al. Submitted (DEC-2007) to the EMBL/GenBank/DDBJ databases.

Taylor T.D., et al. Nature 440:497-500(2006).