

DBF4 Antibody
Purified Rabbit Polyclonal Antibody (Pab)
Catalog # AP51156**Specification**

DBF4 Antibody - Product Information

Application	WB
Primary Accession	O9UBU7
Reactivity	Human
Host	Rabbit
Clonality	Polyclonal
Calculated MW	77 KDa
Antigen Region	11 - 70

DBF4 Antibody - Additional Information**Gene ID** 10926**Other Names**

Protein DBF4 homolog A, Activator of S phase kinase, Chiffon homolog A, DBF4-type zinc finger-containing protein 1, DBF4, ASK, DBF4A, ZDBF1

Target/Specificity

KLH conjugated synthetic peptide derived from human DBF4

Dilution

WB~~ 1:1000

Format

0.01M PBS, pH 7.2, 0.09% (W/V) Sodium azide, Glycerol 50%

Storage

Store at -20 °C. Stable for 12 months from date of receipt

DBF4 Antibody - Protein Information**Name** DBF4**Synonyms** ASK, DBF4A, ZDBF1**Function**

Regulatory subunit for CDC7 which activates its kinase activity thereby playing a central role in DNA replication and cell proliferation. Required for progression of S phase. The complex CDC7-DBF4A selectively phosphorylates MCM2 subunit at 'Ser-40' and 'Ser-53' and then is involved in regulating the initiation of DNA replication during cell cycle.

Cellular Location

Nucleus.

Tissue Location

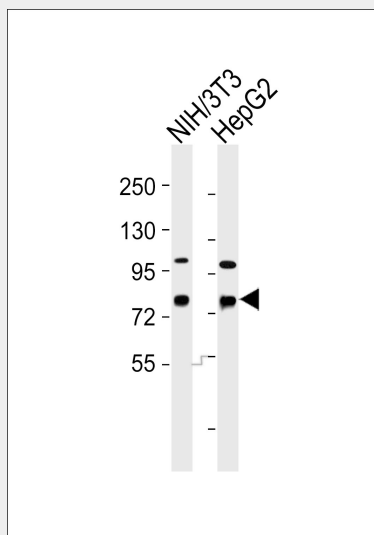
Highly expressed in testis and thymus. Expressed also in most cancer cells lines.

DBF4 Antibody - Protocols

Provided below are standard protocols that you may find useful for product applications.

- [Western Blot](#)
- [Blocking Peptides](#)
- [Dot Blot](#)
- [Immunohistochemistry](#)
- [Immunofluorescence](#)
- [Immunoprecipitation](#)
- [Flow Cytometry](#)
- [Cell Culture](#)

DBF4 Antibody - Images



All lanes : Anti-DBF4 Antibody at 1:1000 dilution Lane 1: NIH/3T3 whole cell lysates Lane 2: HepG2 whole cell lysates Lysates/proteins at 20 µg per lane. Secondary Goat Anti-Rabbit IgG, (H+L), Peroxidase conjugated at 1/10000 dilution Predicted band size : 77 kDa Blocking/Dilution buffer: 5% NFDN/TBST.

DBF4 Antibody - Background

Regulatory subunit for CDC7 which activates its kinase activity thereby playing a central role in DNA replication and cell proliferation. Required for progression of S phase. The complex CDC7-DBF4A selectively phosphorylates MCM2 subunit at 'Ser-40' and 'Ser-53' and then is involved in regulating the initiation of DNA replication during cell cycle.

DBF4 Antibody - References

- Kumagai H., et al. Mol. Cell. Biol. 19:5083-5095(1999).
Jiang W., et al. EMBO J. 18:5703-5713(1999).
Hollingsworth R., et al. Submitted (JUN-1999) to the EMBL/GenBank/DDBJ databases.
Ota T., et al. Nat. Genet. 36:40-45(2004).
Hillier L.W., et al. Nature 424:157-164(2003).

