

Cytochrome b5A Antibody
Purified Rabbit Polyclonal Antibody (Pab)
Catalog # AP51138**Specification**

Cytochrome b5A Antibody - Product Information

Application	WB
Primary Accession	P00167
Reactivity	Human
Host	Rabbit
Clonality	Polyclonal
Calculated MW	15 KDa
Antigen Region	51 - 110

Cytochrome b5A Antibody - Additional Information**Gene ID** 1528**Other Names**

Cytochrome b5, Mitochondrial cytochrome b5 type A, MCB5, CYB5A, CYB5

Target/Specificity

KLH conjugated synthetic peptide derived from human Cytochrome b5A

Dilution

WB~~ 1:1000

Format

0.01M PBS, pH 7.2, 0.09% (W/V) Sodium azide, Glycerol 50%

Storage

Store at -20 °C. Stable for 12 months from date of receipt

Cytochrome b5A Antibody - Protein Information**Name** CYB5A**Synonyms** CYB5**Function**

Cytochrome b5 is a membrane-bound hemoprotein functioning as an electron carrier for several membrane-bound oxygenases.

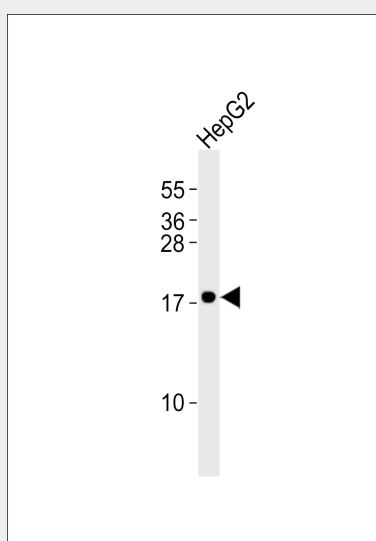
Cellular Location[Isoform 1]: Endoplasmic reticulum membrane; Single-pass membrane protein; Cytoplasmic side.
Mitochondrial membrane; Single-pass membrane protein; Cytoplasmic side

Cytochrome b5A Antibody - Protocols

Provided below are standard protocols that you may find useful for product applications.

- [Western Blot](#)
- [Blocking Peptides](#)
- [Dot Blot](#)
- [Immunohistochemistry](#)
- [Immunofluorescence](#)
- [Immunoprecipitation](#)
- [Flow Cytometry](#)
- [Cell Culture](#)

Cytochrome b5A Antibody - Images



Anti-Cytochrome b5A Antibody at 1:1000 dilution + HepG2 whole cell lysates Lysates/proteins at 20 µg per lane. Secondary Goat Anti-Rabbit IgG, (H+L), Peroxidase conjugated at 1/10000 dilution
Predicted band size : 15 kDa Blocking/Dilution buffer: 5% NFD/MTBST.

Cytochrome b5A Antibody - Background

Cytochrome b5 is a membrane bound hemoprotein which function as an electron carrier for several membrane bound oxygenases.

Cytochrome b5A Antibody - References

- Yoo M., et al. *Biochem. Biophys. Res. Commun.* 156:576-580(1988).
Giordano S.J., et al. *Biochem. Biophys. Res. Commun.* 178:38-44(1991).
Li X.R., et al. *Biochem. Biophys. Res. Commun.* 209:894-900(1995).
Melton D., et al. Submitted (DEC-2002) to the EMBL/GenBank/DDBJ databases.
Ebert L., et al. Submitted (JUN-2004) to the EMBL/GenBank/DDBJ databases.