

**Cathepsin D LC Antibody**  
**Purified Rabbit Polyclonal Antibody (Pab)**  
**Catalog # AP51128**

## Specification

---

### Cathepsin D LC Antibody - Product Information

Application	WB
Primary Accession	<a href="#">P07339</a>
Reactivity	Human, Mouse, Rat
Host	Rabbit
Clonality	Polyclonal
Calculated MW	11 KDa
Antigen Region	21 - 80

### Cathepsin D LC Antibody - Additional Information

**Gene ID** 1509

#### Other Names

Cathepsin D, Cathepsin D light chain, Cathepsin D heavy chain, CTSD, CPSD

#### Target/Specificity

KLH conjugated synthetic peptide derived from human Cathepsin D LC

#### Dilution

WB~~ 1:1000

#### Format

0.01M PBS, pH 7.2, 0.09% (W/V) Sodium azide, Glycerol 50%

#### Storage

Store at -20 °C. Stable for 12 months from date of receipt

### Cathepsin D LC Antibody - Protein Information

**Name** CTSD

**Synonyms** CPSD

#### Function

Acid protease active in intracellular protein breakdown. Plays a role in APP processing following cleavage and activation by ADAM30 which leads to APP degradation (PubMed:<a href="http://www.uniprot.org/citations/27333034" target="\_blank">27333034</a>). Involved in the pathogenesis of several diseases such as breast cancer and possibly Alzheimer disease.

#### Cellular Location

Lysosome. Melanosome. Secreted, extracellular space. Note=Identified by mass spectrometry in melanosome fractions from stage I to stage IV. In aortic samples, detected as an extracellular

protein loosely bound to the matrix (PubMed:20551380)

#### Tissue Location

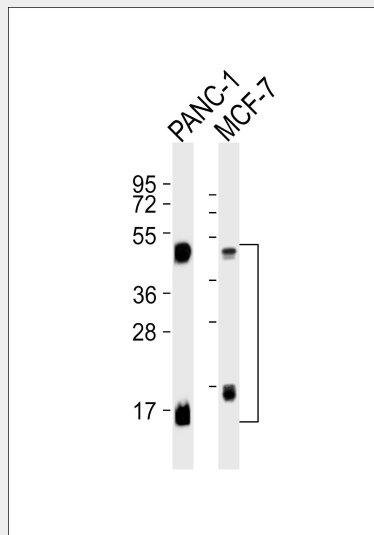
Expressed in the aorta extracellular space (at protein level) (PubMed:20551380). Expressed in liver (at protein level) (PubMed:1426530).

#### Cathepsin D LC Antibody - Protocols

Provided below are standard protocols that you may find useful for product applications.

- [Western Blot](#)
- [Blocking Peptides](#)
- [Dot Blot](#)
- [Immunohistochemistry](#)
- [Immunofluorescence](#)
- [Immunoprecipitation](#)
- [Flow Cytometry](#)
- [Cell Culture](#)

#### Cathepsin D LC Antibody - Images



All lanes : Anti-Cathepsin D LC Antibody at 1:1000 dilution Lane 1: PANC-1 whole cell lysates Lane 2: MCF-7 whole cell lysates Lysates/proteins at 20 µg per lane. Secondary Goat Anti-Rabbit IgG, (H+L), Peroxidase conjugated at 1/10000 dilution Predicted band size : 45 kDa Blocking/Dilution buffer: 5% NFDM/TBST.

#### Cathepsin D LC Antibody - Background

Acid protease active in intracellular protein breakdown. Involved in the pathogenesis of several diseases such as breast cancer and possibly Alzheimer disease.

#### Cathepsin D LC Antibody - References

- Faust P.L., et al. Proc. Natl. Acad. Sci. U.S.A. 82:4910-4914(1985).  
Westley B.R., et al. Nucleic Acids Res. 15:3773-3786(1987).  
Redecker B., et al. DNA Cell Biol. 10:423-431(1991).  
Ebert L., et al. Submitted (JUN-2004) to the EMBL/GenBank/DDBJ databases.

Kalnine N., et al. Submitted (OCT-2004) to the EMBL/GenBank/DDBJ databases.