

CTDSP1 Antibody
Purified Rabbit Polyclonal Antibody (Pab)
Catalog # AP51124**Specification**

CTDSP1 Antibody - Product Information

Application	WB
Primary Accession	O9GZU7
Reactivity	Human, Mouse, Rat
Host	Rabbit
Clonality	Polyclonal
Calculated MW	30 KDa
Antigen Region	1 - 60

CTDSP1 Antibody - Additional Information**Gene ID** 58190**Other Names**

Carboxy-terminal domain RNA polymerase II polypeptide A small phosphatase 1, Nuclear LIM interactor-interacting factor 3, NLI-IF, NLI-interacting factor 3, Small C-terminal domain phosphatase 1, SCP1, Small CTD phosphatase 1, CTDSP1, NIF3, NLIIF, SCP1

Target/Specificity

KLH conjugated synthetic peptide derived from human CTDSP1

Dilution

WB~~ 1:1000

Format

0.01M PBS, pH 7.2, 0.09% (W/V) Sodium azide, Glycerol 50%

Storage

Store at -20 °C. Stable for 12 months from date of receipt

CTDSP1 Antibody - Protein Information**Name** CTDSP1**Synonyms** NIF3, NLIIF, SCP1**Function**

Preferentially catalyzes the dephosphorylation of 'Ser-5' within the tandem 7 residue repeats in the C-terminal domain (CTD) of the largest RNA polymerase II subunit POLR2A. Negatively regulates RNA polymerase II transcription, possibly by controlling the transition from initiation/capping to processive transcript elongation. Recruited by REST to neuronal genes that contain RE-1 elements, leading to neuronal gene silencing in non-neuronal cells.

Cellular Location

Nucleus. Note=Colocalizes with RNA polymerase II

Tissue Location

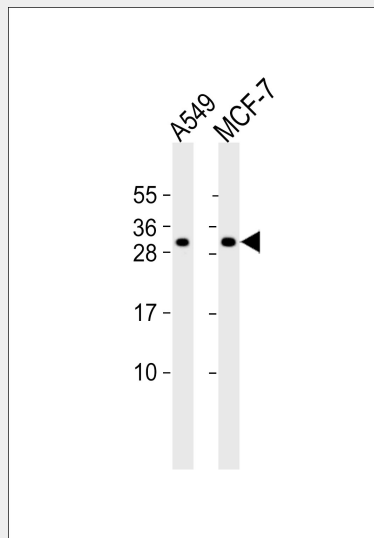
Expression is restricted to non-neuronal tissues. Highest expression in skeletal muscle, spleen, lung and placenta

CTDSP1 Antibody - Protocols

Provided below are standard protocols that you may find useful for product applications.

- [Western Blot](#)
- [Blocking Peptides](#)
- [Dot Blot](#)
- [Immunohistochemistry](#)
- [Immunofluorescence](#)
- [Immunoprecipitation](#)
- [Flow Cytometry](#)
- [Cell Culture](#)

CTDSP1 Antibody - Images



All lanes : Anti-CTDSP1 Antibody at 1:1000 dilution Lane 1: A549 whole cell lysates Lane 2: MCF-7 whole cell lysates Lysates/proteins at 20 µg per lane. Secondary Goat Anti-Rabbit IgG, (H+L), Peroxidase conjugated at 1/10000 dilution Predicted band size : 29 kDa Blocking/Dilution buffer: 5% NFDM/TBST.

CTDSP1 Antibody - Background

Preferentially catalyzes the dephosphorylation of 'Ser- 5' within the tandem 7 residues repeats in the C-terminal domain (CTD) of the largest RNA polymerase II subunit POLR2A. Negatively regulates RNA polymerase II transcription, possibly by controlling the transition from initiation/capping to processive transcript elongation. Recruited by REST to neuronal genes that contain RE-1 elements, leading to neuronal gene silencing in non-neuronal cells.

CTDSP1 Antibody - References

Marquet S.,et al.Mamm. Genome 11:755-762(2000).
Yeo M.,et al.J. Biol. Chem. 278:26078-26085(2003).
Li W.B.,et al.Submitted (APR-2003) to the EMBL/GenBank/DDBJ databases.
Hillier L.W.,et al.Nature 434:724-731(2005).
Yeo M.,et al.Science 307:596-600(2005).