

Collagen 6 alpha 2 Antibody
Purified Rabbit Polyclonal Antibody (Pab)
Catalog # AP51109

Specification

Collagen 6 alpha 2 Antibody - Product Information

Application	WB
Primary Accession	P12110
Reactivity	Human
Host	Rabbit
Clonality	Polyclonal
Calculated MW	109 KDa
Antigen Region	681 - 740

Collagen 6 alpha 2 Antibody - Additional Information

Gene ID 1292

Other Names

Collagen alpha-2(VI) chain, COL6A2

Target/Specificity

KLH conjugated synthetic peptide derived from human Collagen 6 alpha 2

Dilution

WB~~ 1:1000

Format

0.01M PBS, pH 7.2, 0.09% (W/V) Sodium azide, Glycerol 50%

Storage

Store at -20 °C. Stable for 12 months from date of receipt

Collagen 6 alpha 2 Antibody - Protein Information

Name COL6A2

Function

Collagen VI acts as a cell-binding protein.

Cellular Location

Secreted, extracellular space, extracellular matrix. Membrane; Peripheral membrane protein.

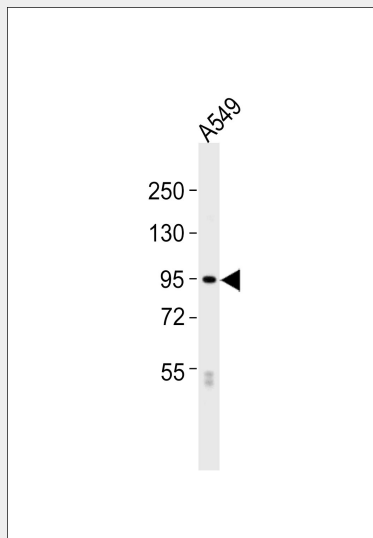
Note=Recruited on membranes by CSPG4

Collagen 6 alpha 2 Antibody - Protocols

Provided below are standard protocols that you may find useful for product applications.

- [Western Blot](#)
- [Blocking Peptides](#)
- [Dot Blot](#)
- [Immunohistochemistry](#)
- [Immunofluorescence](#)
- [Immunoprecipitation](#)
- [Flow Cytometry](#)
- [Cell Culture](#)

Collagen 6 alpha 2 Antibody - Images



Anti-Collagen 6 alpha 2 Antibody at 1:1000 dilution + A549 whole cell lysates Lysates/proteins at 20 µg per lane. Secondary Goat Anti-Rabbit IgG, (H+L), Peroxidase conjugated at 1/10000 dilution Predicted band size : 109 kDa Blocking/Dilution buffer: 5% NFDM/TBST.

Collagen 6 alpha 2 Antibody - Background

Collagen VI acts as a cell-binding protein.

Collagen 6 alpha 2 Antibody - References

- Chu M.-L., et al. Submitted (APR-2001) to the EMBL/GenBank/DDBJ databases.
Saitta B., et al. J. Biol. Chem. 267:6188-6196(1992).
Chu M.-L., et al. EMBO J. 8:1939-1946(1989).
Tillet E., et al. Eur. J. Biochem. 221:177-185(1994).
Chu M.-L., et al. Eur. J. Biochem. 168:309-317(1987).