

Cyclin A1 Antibody
Purified Rabbit Polyclonal Antibody (Pab)
Catalog # AP51052

Specification

Cyclin A1 Antibody - Product Information

Application	WB
Primary Accession	P78396
Reactivity	Human, Mouse, Rat
Host	Rabbit
Clonality	Polyclonal
Calculated MW	52, 47 KDa
Antigen Region	221 - 280

Cyclin A1 Antibody - Additional Information

Gene ID 8900

Other Names

Cyclin-A1, CCNA1

Target/Specificity

KLH conjugated synthetic peptide derived from human Cyclin A1

Dilution

WB~~ 1:1000

Format

0.01M PBS, pH 7.2, 0.09% (W/V) Sodium azide, Glycerol 50%

Storage

Store at -20 °C. Stable for 12 months from date of receipt

Cyclin A1 Antibody - Protein Information

Name CCNA1

Function

May be involved in the control of the cell cycle at the G1/S (start) and G2/M (mitosis) transitions. May primarily function in the control of the germline meiotic cell cycle and additionally in the control of mitotic cell cycle in some somatic cells.

Cellular Location

Nucleus.

Tissue Location

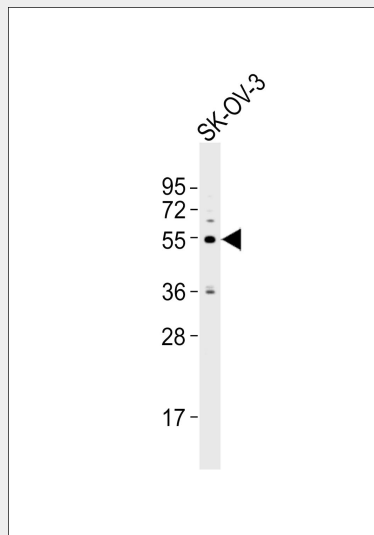
Very high levels in testis and very low levels in brain. Also found in myeloid leukemia cell lines

Cyclin A1 Antibody - Protocols

Provided below are standard protocols that you may find useful for product applications.

- [Western Blot](#)
- [Blocking Peptides](#)
- [Dot Blot](#)
- [Immunohistochemistry](#)
- [Immunofluorescence](#)
- [Immunoprecipitation](#)
- [Flow Cytometry](#)
- [Cell Culture](#)

Cyclin A1 Antibody - Images



Anti-Cyclin A1 Antibody at 1:1000 dilution + SK-OV-3 whole cell lysates Lysates/proteins at 20 µg per lane. Secondary Goat Anti-Rabbit IgG, (H+L), Peroxidase conjugated at 1/10000 dilution Predicted band size : 52 kDa Blocking/Dilution buffer: 5% NFD/MTBST.

Cyclin A1 Antibody - Background

May be involved in the control of the cell cycle at the G1/S (start) and G2/M (mitosis) transitions. May primarily function in the control of the germline meiotic cell cycle and additionally in the control of mitotic cell cycle in some somatic cells.

Cyclin A1 Antibody - References

Yang R., et al. Cancer Res. 57:913-920(1997).
Kalnina N., et al. Submitted (OCT-2004) to the EMBL/GenBank/DDBJ databases.
Ota T., et al. Nat. Genet. 36:40-45(2004).
Dunham A., et al. Nature 428:522-528(2004).
Mural R.J., et al. Submitted (JUL-2005) to the EMBL/GenBank/DDBJ databases.

Cyclin A1 Antibody - Citations

- [The substitution of SERCA2 redox cysteine 674 promotes pulmonary vascular remodeling by activating IRE1 /XBP1s pathway.](#)
- [Targeting the overexpressed CREB inhibits esophageal squamous cell carcinoma cell](#)

[growth.](#)