

**Caspase 2 p18 Antibody**  
**Purified Rabbit Polyclonal Antibody (Pab)**  
**Catalog # AP51040**

**Specification**

---

**Caspase 2 p18 Antibody - Product Information**

Application	<b>WB</b>
Primary Accession	<a href="#">P42575</a>
Reactivity	<b>Human, Mouse, Rat</b>
Host	<b>Rabbit</b>
Clonality	<b>Polyclonal</b>
Calculated MW	<b>18 KDa</b>
Antigen Region	<b>131 - 190</b>

**Caspase 2 p18 Antibody - Additional Information**

**Gene ID** 835

**Other Names**

Caspase-2, CASP-2, Neural precursor cell expressed developmentally down-regulated protein 2, NEDD-2, Protease ICH-1, Caspase-2 subunit p18, Caspase-2 subunit p13, Caspase-2 subunit p12, CASP2, ICH1, NEDD2

**Target/Specificity**

KLH conjugated synthetic peptide derived from human Caspase 2 p18

**Dilution**

WB~~ 1:1000

**Format**

0.01M PBS, pH 7.2, 0.09% (W/V) Sodium azide, Glycerol 50%

**Storage**

Store at -20 °C. Stable for 12 months from date of receipt

**Caspase 2 p18 Antibody - Protein Information**

**Name** CASP2

**Synonyms** ICH1, NEDD2

**Function**

Is a regulator of the cascade of caspases responsible for apoptosis execution (PubMed: <a href="http://www.uniprot.org/citations/8087842" target="\_blank">8087842</a>, PubMed: <a href="http://www.uniprot.org/citations/11156409" target="\_blank">11156409</a>, PubMed: <a href="http://www.uniprot.org/citations/15073321" target="\_blank">15073321</a>). Might function by either activating some proteins required for cell death or inactivating proteins necessary for cell survival (PubMed: <a href="http://www.uniprot.org/citations/15073321" target="\_blank">15073321</a>)

target="\_blank">15073321</a>). Associates with PIDD1 and CRADD to form the PIDDosome, a complex that activates CASP2 and triggers apoptosis in response to genotoxic stress (PubMed:<a href="http://www.uniprot.org/citations/15073321" target="\_blank">15073321</a>).

#### Tissue Location

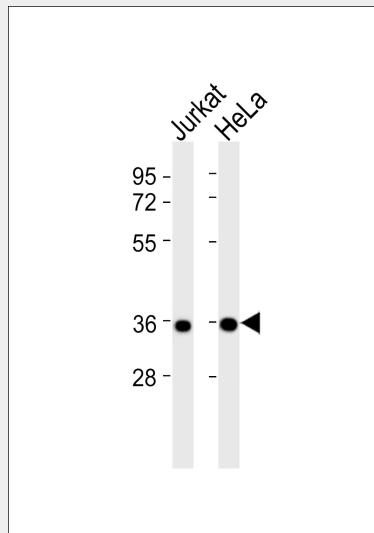
Expressed at higher levels in the embryonic lung, liver and kidney than in the heart and brain. In adults, higher level expression is seen in the placenta, lung, kidney, and pancreas than in the heart, brain, liver and skeletal muscle

### Caspase 2 p18 Antibody - Protocols

Provided below are standard protocols that you may find useful for product applications.

- [Western Blot](#)
- [Blocking Peptides](#)
- [Dot Blot](#)
- [Immunohistochemistry](#)
- [Immunofluorescence](#)
- [Immunoprecipitation](#)
- [Flow Cytometry](#)
- [Cell Culture](#)

### Caspase 2 p18 Antibody - Images



All lanes : Anti-Caspase 2 p18 Antibody at 1:1000 dilution Lane 1: Jurkat whole cell lysates Lane 2: HeLa whole cell lysates Lysates/proteins at 20 µg per lane. Secondary Goat Anti-Rabbit IgG, (H+L), Peroxidase conjugated at 1/10000 dilution Predicted band size : 51 kDa Blocking/Dilution buffer: 5% NFDM/TBST.

### Caspase 2 p18 Antibody - Background

Involved in the activation cascade of caspases responsible for apoptosis execution. Might function by either activating some proteins required for cell death or inactivating proteins necessary for cell survival.

### Caspase 2 p18 Antibody - References

Wang L.,et al.Cell 78:739-750(1994).  
Droin N.,et al.Cancer Res. 60:7039-7047(2000).  
Halleck A.,et al.Submitted (JUN-2004) to the EMBL/GenBank/DDBJ databases.  
Ota T.,et al.Nat. Genet. 36:40-45(2004).  
Hillier L.W.,et al.Nature 424:157-164(2003).