

**CADM4 Antibody**  
**Purified Rabbit Polyclonal Antibody (Pab)**  
**Catalog # AP51030****Specification**

---

**CADM4 Antibody - Product Information**

Application	<b>WB</b>
Primary Accession	<a href="#">Q8NFZ8</a>
Reactivity	<b>Human, Mouse, Rat</b>
Host	<b>Rabbit</b>
Clonality	<b>Polyclonal</b>
Calculated MW	<b>43 KDa</b>
Antigen Region	<b>321 - 380</b>

**CADM4 Antibody - Additional Information****Gene ID** 199731**Other Names**

Cell adhesion molecule 4, Immunoglobulin superfamily member 4C, IgSF4C, Nectin-like protein 4, NECL-4, TSLC1-like protein 2, CADM4, IGSF4C, NECL4, TSLL2

**Target/Specificity**

KLH conjugated synthetic peptide derived from human CADM4

**Dilution**

WB~~ 1:1000

**Format**

0.01M PBS, pH 7.2, 0.09% (W/V) Sodium azide, Glycerol 50%

**Storage**

Store at -20 °C. Stable for 12 months from date of receipt

**CADM4 Antibody - Protein Information****Name** CADM4**Synonyms** IGSF4C, NECL4, TSLL2**Function**

Involved in the cell-cell adhesion. Has calcium- and magnesium-independent cell-cell adhesion activity. May have tumor- suppressor activity.

**Cellular Location**

Membrane; Single-pass type I membrane protein

**Tissue Location**

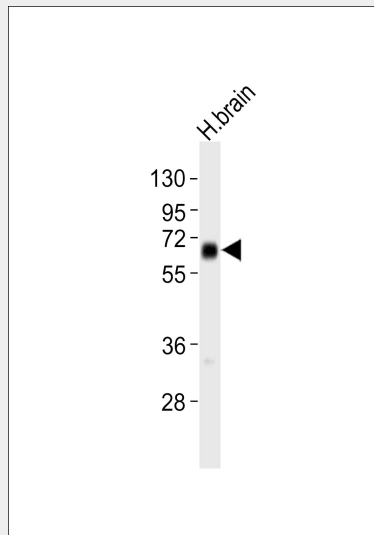
Expressed in brain, prostate, brain, kidney and some other organs.

### CADM4 Antibody - Protocols

Provided below are standard protocols that you may find useful for product applications.

- [Western Blot](#)
- [Blocking Peptides](#)
- [Dot Blot](#)
- [Immunohistochemistry](#)
- [Immunofluorescence](#)
- [Immunoprecipitation](#)
- [Flow Cytometry](#)
- [Cell Culture](#)

### CADM4 Antibody - Images



Anti-CADM4 Antibody at 1:1000 dilution + H.brain tissue lysates Lysates/proteins at 20  $\mu$ g per lane. Secondary Goat Anti-Rabbit IgG, (H+L), Peroxidase conjugated at 1/10000 dilution Predicted band size : 43 kDa Blocking/Dilution buffer: 5% NFDM/TBST.

### CADM4 Antibody - Background

Involved in the cell-cell adhesion. Has calcium- and magnesium-independent cell-cell adhesion activity. May have tumor- suppressor activity.

### CADM4 Antibody - References

- Fukuhara H., et al. *Oncogene* 20:5401-5407(2001).  
Ota T., et al. *Nat. Genet.* 36:40-45(2004).  
Grimwood J., et al. *Nature* 428:529-535(2004).  
Williams Y.N., et al. *Oncogene* 25:1446-1453(2006).