

Arylsulfatase A Antibody
Purified Rabbit Polyclonal Antibody (Pab)
Catalog # AP50998**Specification**

Arylsulfatase A Antibody - Product Information

Application	WB
Primary Accession	P15289
Reactivity	Human, Mouse, Rat
Host	Rabbit
Clonality	Polyclonal
Calculated MW	54 KDa
Antigen Region	241 - 300

Arylsulfatase A Antibody - Additional Information**Gene ID** 410**Other Names**

Arylsulfatase A, ASA, Cerebroside-sulfatase, Arylsulfatase A component B, Arylsulfatase A component C, ARSA

Target/Specificity

KLH conjugated synthetic peptide derived from human Arylsulfatase A

Dilution

WB~~ 1:1000

Format

0.01M PBS, pH 7.2, 0.09% (W/V) Sodium azide, Glycerol 50%

Storage

Store at -20 °C. Stable for 12 months from date of receipt

Arylsulfatase A Antibody - Protein Information**Name** ARSA**Function**

Hydrolyzes cerebroside sulfate.

Cellular Location

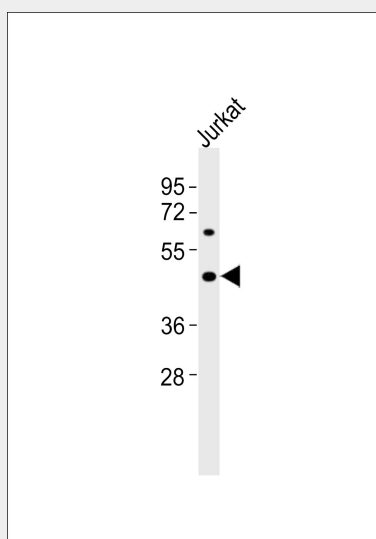
Endoplasmic reticulum. Lysosome

Arylsulfatase A Antibody - Protocols

Provided below are standard protocols that you may find useful for product applications.

- [Western Blot](#)
- [Blocking Peptides](#)
- [Dot Blot](#)
- [Immunohistochemistry](#)
- [Immunofluorescence](#)
- [Immunoprecipitation](#)
- [Flow Cytometry](#)
- [Cell Culture](#)

Arylsulfatase A Antibody - Images



Anti-Arylsulfatase A Antibody at 1:1000 dilution + Jurkat whole cell lysates Lysates/proteins at 20 μ g per lane. Secondary Goat Anti-Rabbit IgG, (H+L), Peroxidase conjugated at 1/10000 dilution
Predicted band size : 54,45 kDa Blocking/Dilution buffer: 5% NFDM/TBST.

Arylsulfatase A Antibody - Background

Hydrolyzes cerebroside sulfate.

Arylsulfatase A Antibody - References

Stein C., et al. J. Biol. Chem. 264:1252-1259(1989).
Kreysing J., et al. Eur. J. Biochem. 191:627-631(1990).
Oshikawa M., et al. Mol. Vis. 15:482-494(2009).
Collins J.E., et al. Genome Biol. 5:R84.1-R84.11(2004).
Ota T., et al. Nat. Genet. 36:40-45(2004).