

Annexin A2 Antibody
Purified Rabbit Polyclonal Antibody (Pab)
Catalog # AP50977

Specification

Annexin A2 Antibody - Product Information

Application	WB
Primary Accession	P07355
Reactivity	Human, Mouse, Rat
Host	Rabbit
Clonality	Polyclonal
Calculated MW	38 KDa
Antigen Region	101 - 160

Annexin A2 Antibody - Additional Information

Gene ID 302

Other Names

Annexin A2, Annexin II, Annexin-2, Calpactin I heavy chain, Calpactin-1 heavy chain, Chromobindin-8, Lipocortin II, Placental anticoagulant protein IV, PAP-IV, Protein I, p36, ANXA2, ANX2, ANX2L4, CAL1H, LPC2D

Target/Specificity

KLH conjugated synthetic peptide derived from human Annexin A2

Dilution

WB~~ 1:1000

Format

0.01M PBS, pH 7.2, 0.09% (W/V) Sodium azide, Glycerol 50%

Storage

Store at -20 °C. Stable for 12 months from date of receipt

Annexin A2 Antibody - Protein Information

Name ANXA2

Synonyms ANX2, ANX2L4, CAL1H, LPC2D

Function

Calcium-regulated membrane-binding protein whose affinity for calcium is greatly enhanced by anionic phospholipids. It binds two calcium ions with high affinity. May be involved in heat-stress response. Inhibits PCSK9-enhanced LDLR degradation, probably reduces PCSK9 protein levels via a translational mechanism but also competes with LDLR for binding with PCSK9 (PubMed:18799458, PubMed:22848640, PubMed:22848640, PubMed:22848640)

href="http://www.uniprot.org/citations/24808179" target="_blank">24808179).

Cellular Location

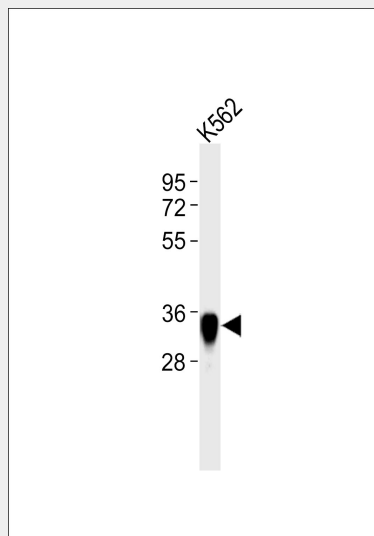
Secreted, extracellular space, extracellular matrix, basement membrane. Melanosome. Note=In the lamina beneath the plasma membrane. Identified by mass spectrometry in melanosome fractions from stage I to stage IV. Translocated from the cytoplasm to the cell surface through a Golgi-independent mechanism

Annexin A2 Antibody - Protocols

Provided below are standard protocols that you may find useful for product applications.

- [Western Blot](#)
- [Blocking Peptides](#)
- [Dot Blot](#)
- [Immunohistochemistry](#)
- [Immunofluorescence](#)
- [Immunoprecipitation](#)
- [Flow Cytometry](#)
- [Cell Culture](#)

Annexin A2 Antibody - Images



Anti-Annexin A2 Antibody at 1:1000 dilution + K562 whole cell lysates Lysates/proteins at 20 µg per lane. Secondary Goat Anti-Rabbit IgG, (H+L), Peroxidase conjugated at 1/10000 dilution Predicted band size : 39,40 kDa Blocking/Dilution buffer: 5% NFD/MTBST.

Annexin A2 Antibody - Background

Calcium-regulated membrane-binding protein whose affinity for calcium is greatly enhanced by anionic phospholipids. It binds two calcium ions with high affinity. May be involved in heat-stress response.

Annexin A2 Antibody - References

Huang K.-S., et al. Cell 46:191-199(1986).
Spano F., et al. Gene 95:243-251(1990).

Kalnine N., et al. Submitted (MAY-2003) to the EMBL/GenBank/DDBJ databases.
Bechtel S., et al. BMC Genomics 8:399-399(2007).
Zody M.C., et al. Nature 440:671-675(2006).