

ALDH2 Antibody
Purified Rabbit Polyclonal Antibody (Pab)
Catalog # AP50970**Specification**

ALDH2 Antibody - Product Information

Application	WB
Primary Accession	P05091
Reactivity	Human
Host	Rabbit
Clonality	Polyclonal
Calculated MW	56 KDa
Antigen Region	41 - 100

ALDH2 Antibody - Additional Information**Gene ID** 217**Other Names**

Aldehyde dehydrogenase, mitochondrial, ALDH class 2, ALDH-E2, ALDH1, ALDH2, ALDM

Target/Specificity

KLH conjugated synthetic peptide derived from human ALDH2

Dilution

WB~~ 1:1000

Format

0.01M PBS, pH 7.2, 0.09% (W/V) Sodium azide, Glycerol 50%

Storage

Store at -20 °C. Stable for 12 months from date of receipt

ALDH2 Antibody - Protein Information**Name** ALDH2**Synonyms** ALDM**Function**

Required for clearance of cellular formaldehyde, a cytotoxic and carcinogenic metabolite that induces DNA damage.

Cellular Location

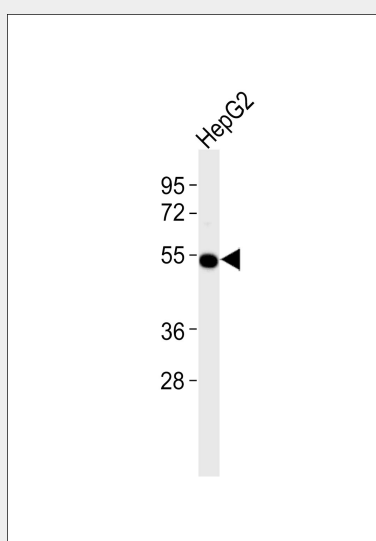
Mitochondrion matrix.

ALDH2 Antibody - Protocols

Provided below are standard protocols that you may find useful for product applications.

- [Western Blot](#)
- [Blocking Peptides](#)
- [Dot Blot](#)
- [Immunohistochemistry](#)
- [Immunofluorescence](#)
- [Immunoprecipitation](#)
- [Flow Cytometry](#)
- [Cell Culture](#)

ALDH2 Antibody - Images



Anti-ALDH2 Antibody at 1:1000 dilution + HepG2 whole cell lysates. Lysates/proteins at 20 µg per lane. Secondary Goat Anti-Rabbit IgG, (H+L), Peroxidase conjugated at 1/10000 dilution. Predicted band size : 56 kDa. Blocking/Dilution buffer: 5% NFDM/TBST.

ALDH2 Antibody - References

- Braun T., et al. FEBS Lett. 215:233-236(1987).
Braun T., et al. FEBS Lett. 233:440-440(1988).
Braun T., et al. Nucleic Acids Res. 15:3179-3179(1987).
Hsu L.C., et al. Genomics 2:57-65(1988).
Lassen N., et al. Submitted (MAY-2004) to the EMBL/GenBank/DDBJ databases.