

**CABC1 Antibody**  
**Purified Rabbit Polyclonal Antibody (Pab)**  
**Catalog # AP50963**

**Specification**

---

**CABC1 Antibody - Product Information**

Application	<b>WB</b>
Primary Accession	<a href="#">O8NI60</a>
Reactivity	<b>Human, Mouse, Rat</b>
Host	<b>Rabbit</b>
Clonality	<b>Polyclonal</b>
Calculated MW	<b>72 KDa</b>
Antigen Region	<b>281 - 340</b>

**CABC1 Antibody - Additional Information**

**Gene ID** 56997

**Other Names**

Chaperone activity of bc1 complex-like, mitochondrial, Chaperone-ABC1-like, 2711-, aarF domain-containing protein kinase 3, ADCK3, CABC1

**Target/Specificity**

KLH conjugated synthetic peptide derived from human CABC1

**Dilution**

WB~~ 1:1000

**Format**

0.01M PBS, pH 7.2, 0.09% (W/V) Sodium azide, Glycerol 50%

**Storage**

Store at -20 °C. Stable for 12 months from date of receipt

**CABC1 Antibody - Protein Information**

**Name** COQ8A {ECO:0000303|PubMed:27499294, ECO:0000312|HGNC:HGNC:16812}

**Function**

Atypical kinase involved in the biosynthesis of coenzyme Q, also named ubiquinone, an essential lipid-soluble electron transporter for aerobic cellular respiration (PubMed:<a href="http://www.uniprot.org/citations/21296186" target="\_blank">21296186</a>, PubMed:<a href="http://www.uniprot.org/citations/25498144" target="\_blank">25498144</a>, PubMed:<a href="http://www.uniprot.org/citations/25540914" target="\_blank">25540914</a>, PubMed:<a href="http://www.uniprot.org/citations/27499294" target="\_blank">27499294</a>). Its substrate specificity is unclear: does not show any protein kinase activity (PubMed:<a href="http://www.uniprot.org/citations/25498144" target="\_blank">25498144</a>, PubMed:<a href="http://www.uniprot.org/citations/27499294" target="\_blank">27499294</a>). Probably

acts as a small molecule kinase, possibly a lipid kinase that phosphorylates a prenyl lipid in the ubiquinone biosynthesis pathway, as suggested by its ability to bind coenzyme Q lipid intermediates (PubMed:<a href="http://www.uniprot.org/citations/25498144" target="\_blank">25498144</a>, PubMed:<a href="http://www.uniprot.org/citations/27499294" target="\_blank">27499294</a>). Shows an unusual selectivity for binding ADP over ATP (PubMed:<a href="http://www.uniprot.org/citations/25498144" target="\_blank">25498144</a>).

#### Cellular Location

Mitochondrion. Membrane; Single-pass membrane protein {ECO:0000255, ECO:0000305|PubMed:25216398}

#### Tissue Location

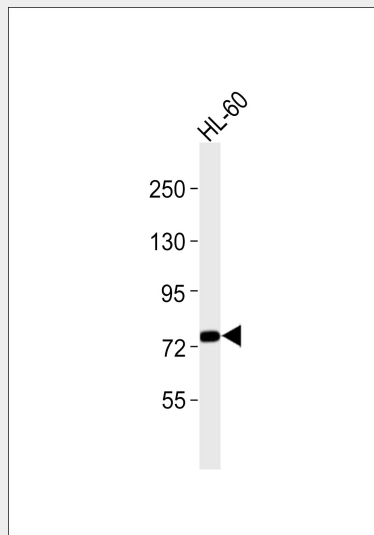
Widely expressed, with highest levels in adrenal gland, heart, pancreas, nasal mucosa, stomach, uterus and skeletal muscle.

### CABC1 Antibody - Protocols

Provided below are standard protocols that you may find useful for product applications.

- [Western Blot](#)
- [Blocking Peptides](#)
- [Dot Blot](#)
- [Immunohistochemistry](#)
- [Immunofluorescence](#)
- [Immunoprecipitation](#)
- [Flow Cytometry](#)
- [Cell Culture](#)

### CABC1 Antibody - Images



Anti-CABC1 Antibody at 1:1000 dilution + HL-60 whole cell lysates Lysates/proteins at 20  $\mu$ g per lane. Secondary Goat Anti-Rabbit IgG, (H+L), Peroxidase conjugated at 1/10000 dilution Predicted band size : 72 kDa Blocking/Dilution buffer: 5% NFDM/TBST.

### CABC1 Antibody - Background

Putative protein kinase involved in the biosynthesis of coenzyme Q since it is able to rescue

partially coenzyme Q6 biosynthesis of yeast COQ8 mutants. May be a chaperone-like protein essential for the proper conformation and functioning of protein complexes in the respiratory chain.

#### **CABC1 Antibody - References**

- Iizumi M., et al. *Cancer Res.* 62:1246-1250(2002).  
Ievolella C., et al. Submitted (MAY-2000) to the EMBL/GenBank/DDBJ databases.  
Wan D., et al. *Proc. Natl. Acad. Sci. U.S.A.* 101:15724-15729(2004).  
Ota T., et al. *Nat. Genet.* 36:40-45(2004).  
Bechtel S., et al. *BMC Genomics* 8:399-399(2007).