

ABI1 Antibody
Purified Rabbit Polyclonal Antibody (Pab)
Catalog # AP50953**Specification**

ABI1 Antibody - Product Information

Application	WB
Primary Accession	Q8IZP0
Reactivity	Human, Mouse, Rat
Host	Rabbit
Clonality	Polyclonal
Calculated MW	55 KDa
Antigen Region	161 - 220

ABI1 Antibody - Additional Information**Gene ID** 10006**Other Names**

Abl interactor 1, Abelson interactor 1, Abi-1, Abl-binding protein 4, AbIBP4, Eps8 SH3 domain-binding protein, Eps8-binding protein, Nap1-binding protein, Nap1BP, Spectrin SH3 domain-binding protein 1, e3B1, ABI1, SSH3BP1

Target/Specificity

KLH conjugated synthetic peptide derived from human ABI1

Dilution

WB~~ 1:1000

Format

0.01M PBS, pH 7.2, 0.09% (W/V) Sodium azide, Glycerol 50%

Storage

Store at -20 °C. Stable for 12 months from date of receipt

ABI1 Antibody - Protein Information**Name** ABI1 ([HGNC:11320](#))**Synonyms** SSH3BP1**Function**

May act in negative regulation of cell growth and transformation by interacting with nonreceptor tyrosine kinases ABL1 and/or ABL2. May play a role in regulation of EGF-induced Erk pathway activation. Involved in cytoskeletal reorganization and EGFR signaling. Together with EPS8 participates in transduction of signals from Ras to Rac. In vitro, a trimeric complex of ABI1, EPS8 and SOS1 exhibits Rac specific guanine nucleotide exchange factor (GEF) activity and ABI1 seems to act as an adapter in the complex. Regulates ABL1/c-Abl- mediated phosphorylation of ENAH.

Recruits WASF1 to lamellipodia and there seems to regulate WASF1 protein level. In brain, seems to regulate the dendritic outgrowth and branching as well as to determine the shape and number of synaptic contacts of developing neurons.

Cellular Location

Cytoplasm. Nucleus. Cell projection, lamellipodium. Cell projection, filopodium. Cell projection, growth cone Postsynaptic density. Cytoplasm, cytoskeleton. Note=Localized to protruding lamellipodia and filopodia tips. Also localized to neuronal growth cones and synaptosomes. May shuttle from the postsynaptic densities to the nucleus (By similarity)

Tissue Location

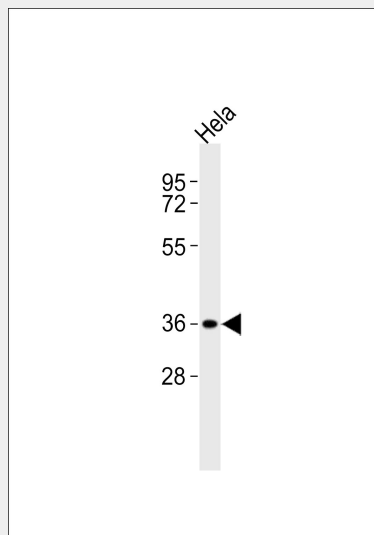
Widely expressed, with highest expression in brain.

ABI1 Antibody - Protocols

Provided below are standard protocols that you may find useful for product applications.

- [Western Blot](#)
- [Blocking Peptides](#)
- [Dot Blot](#)
- [Immunohistochemistry](#)
- [Immunofluorescence](#)
- [Immunoprecipitation](#)
- [Flow Cytometry](#)
- [Cell Culture](#)

ABI1 Antibody - Images



Anti-ABI1 Antibody at 1:1000 dilution + HeLa whole cell lysates Lysates/proteins at 20 μ g per lane. Secondary Goat Anti-Rabbit IgG, (H+L), Peroxidase conjugated at 1/10000 dilution Predicted band size : 55, 49, 52, 46, 43, 52, 36, 54 kDa Blocking/Dilution buffer: 5% NFDN/TBST.

ABI1 Antibody - Background

May act in negative regulation of cell growth and transformation by interacting with nonreceptor tyrosine kinases ABL1 and/or ABL2. May play a role in regulation of EGF-induced Erk pathway activation. Involved in cytoskeletal reorganization and EGFR signaling. Together with EPS8

participates in transduction of signals from Ras to Rac. In vitro, a trimeric complex of ABI1, EPS8 and SOS1 exhibits Rac specific guanine nucleotide exchange factor (GEF) activity and ABI1 seems to act as an adapter in the complex. Regulates ABL1/c-Abl-mediated phosphorylation of ENAH. Recruits WASF1 to lamellipodia and there seems to regulate WASF1 protein level. In brain, seems to regulate the dendritic outgrowth and branching as well as to determine the shape and number of synaptic contacts of developing neurons.

ABI1 Antibody - References

- Biesova Z., et al. *Oncogene* 14:233-241(1997).
Ziemnicka-Kotula D., et al. *J. Biol. Chem.* 273:13681-13692(1998).
Yamamoto A., et al. *Gene* 271:159-169(2001).
Gu Y., et al. *FEBS Lett.* 540:195-200(2003).
Wilson L.A., et al. Submitted (APR-1997) to the EMBL/GenBank/DDBJ databases.