

**PLCG2 Antibody**  
**Purified Rabbit Polyclonal Antibody (Pab)**  
**Catalog # AP50935**

**Specification**

---

**PLCG2 Antibody - Product Information**

Application	<b>WB</b>
Primary Accession	<a href="#">P16885</a>
Reactivity	<b>Human</b>
Host	<b>Rabbit</b>
Clonality	<b>Polyclonal</b>
Calculated MW	<b>148 KDa</b>
Antigen Region	<b>724-773</b>

**PLCG2 Antibody - Additional Information**

**Gene ID** 5336

**Other Names**

1-phosphatidylinositol 4, 5-bisphosphate phosphodiesterase gamma-2, Phosphoinositide phospholipase C-gamma-2, Phospholipase C-IV, PLC-IV, Phospholipase C-gamma-2, PLC-gamma-2, PLCG2

**Dilution**

WB~~ 1:500

**Format**

Rabbit IgG in phosphate buffered saline , pH 7.4, 150mM NaCl, 0.09% (W/V) sodium azide and 50% glycerol

**Storage**

Store at -20 °C. Stable for 12 months from date of receipt

**PLCG2 Antibody - Protein Information**

**Name** PLCG2 ([HGNC:9066](#))

**Function**

The production of the second messenger molecules diacylglycerol (DAG) and inositol 1,4,5-trisphosphate (IP3) is mediated by activated phosphatidylinositol-specific phospholipase C enzymes. It is a crucial enzyme in transmembrane signaling.

**Cellular Location**

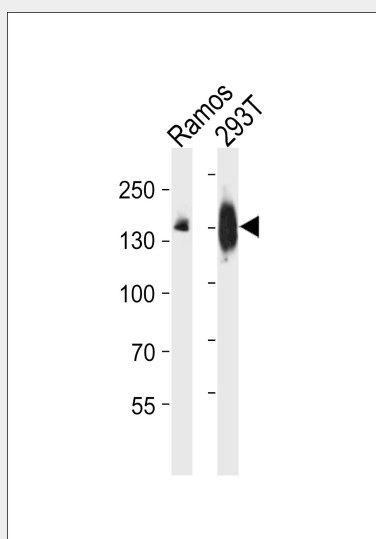
Membrane raft {ECO:0000250|UniProtKB:Q8CIH5}.

**PLCG2 Antibody - Protocols**

Provided below are standard protocols that you may find useful for product applications.

- [Western Blot](#)
- [Blocking Peptides](#)
- [Dot Blot](#)
- [Immunohistochemistry](#)
- [Immunofluorescence](#)
- [Immunoprecipitation](#)
- [Flow Cytometry](#)
- [Cell Culture](#)

### PLCG2 Antibody - Images



Western blot analysis of lysates from Ramos,293T cell line (from left to right), using PLCG2 Antibody(A1-1043). A1-1043 was diluted at 1:500 at each lane. A goat anti-rabbit IgG H&L(HRP) at 1:10000 dilution was used as the secondary antibody.Lysates at 20ug per lane.

### PLCG2 Antibody - Background

The production of the second messenger molecules diacylglycerol (DAG) and inositol 1,4,5-trisphosphate (IP3) is mediated by activated phosphatidylinositol-specific phospholipase C enzymes. It is a crucial enzyme in transmembrane signaling.

### PLCG2 Antibody - References

Ohta S.,et al.FEBS Lett. 242:31-35(1988).  
Totoki Y.,et al.Submitted (MAR-2005) to the EMBL/GenBank/DDBJ databases.  
Kemmer D.,et al.BMC Genomics 7:48-48(2006).  
Martin J.,et al.Nature 432:988-994(2004).  
Mural R.J.,et al.Submitted (SEP-2005) to the EMBL/GenBank/DDBJ databases.