

ARPP21 Antibody
Purified Rabbit Polyclonal Antibody (Pab)
Catalog # AP50846**Specification**

ARPP21 Antibody - Product Information

Application	WB, IHC
Primary Accession	O9UBL0
Reactivity	Human, Mouse
Host	Rabbit
Clonality	Polyclonal
Calculated MW	89,10,86,36,12 KDa
Antigen Region	231-260

ARPP21 Antibody - Additional Information**Gene ID** 10777**Other Names**

cAMP-regulated phosphoprotein 21, ARPP-21, Thymocyte cAMP-regulated phosphoprotein, ARPP21, TARPP

Dilution

WB~~ 1:1000

IHC~~1:50~100

FormatRabbit IgG in phosphate buffered saline (without Mg²⁺ and Ca²⁺), pH 7.4, 150mM NaCl, 0.09% (W/V) sodium azide and 50% glycerol.**Storage Conditions**

-20°C

ARPP21 Antibody - Protein Information**Name** ARPP21**Synonyms** TARPP**Function**

Isoform 2 may act as a competitive inhibitor of calmodulin- dependent enzymes such as calcineurin in neurons.

Cellular Location

Cytoplasm.

Tissue Location

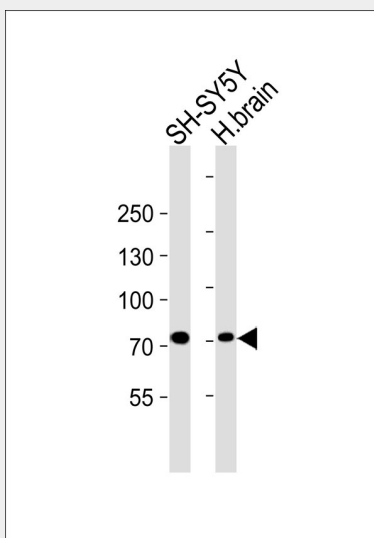
Isoform 2 is expressed in brain. Isoform 1 is present in immature thymocytes (at protein level)

ARPP21 Antibody - Protocols

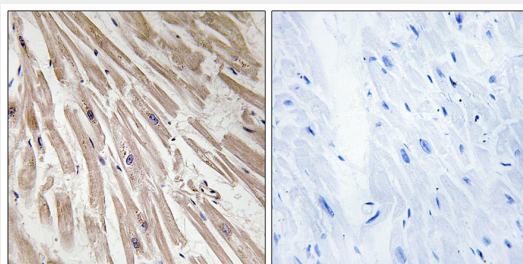
Provided below are standard protocols that you may find useful for product applications.

- [Western Blot](#)
- [Blocking Peptides](#)
- [Dot Blot](#)
- [Immunohistochemistry](#)
- [Immunofluorescence](#)
- [Immunoprecipitation](#)
- [Flow Cytometry](#)
- [Cell Culture](#)

ARPP21 Antibody - Images



Western blot analysis of lysates from SH-SY5Y cell line and human brain tissue lysate (from left to right), using ARPP21 Antibody, was diluted at 1:1000 at each lane. A goat anti-rabbit IgG H&L (HRP) at 1:5000 dilution was used as the secondary antibody. Lysates at 35 µg per lane.



Immunohistochemistry analysis of paraffin-embedded human heart tissue, using ARPP21 antibody.

ARPP21 Antibody - Background

Isoform 2 may act as a competitive inhibitor of calmodulin-dependent enzymes such as calcineurin in neurons (By similarity).

ARPP21 Antibody - References

Brene S.,et al.J. Neurosci. 14:985-998(1994).

Hu R.-M.,et al.Proc. Natl. Acad. Sci. U.S.A. 97:9543-9548(2000).

Ota T.,et al.Nat. Genet. 36:40-45(2004).

Mural R.J.,et al.Submitted (JUL-2005) to the EMBL/GenBank/DDBJ databases.

Bechtel S.,et al.BMC Genomics 8:399-399(2007).