

**AGPAT5 Antibody**  
**Purified Rabbit Polyclonal Antibody (Pab)**  
**Catalog # AP50840****Specification**

---

**AGPAT5 Antibody - Product Information**

Application	<b>WB</b>
Primary Accession	<a href="#">O9NUQ2</a>
Reactivity	<b>Human</b>
Host	<b>Rabbit</b>
Clonality	<b>Polyclonal</b>
Calculated MW	<b>42 KDa</b>
Antigen Region	<b>253-281</b>

**AGPAT5 Antibody - Additional Information****Gene ID** 55326**Other Names**

1-acyl-sn-glycerol-3-phosphate acyltransferase epsilon, 1-acylglycerol-3-phosphate O-acyltransferase 5, 1-AGP acyltransferase 5, 1-AGPAT 5, Lysophosphatidic acid acyltransferase epsilon, LPAAT-epsilon, AGPAT5

**Dilution**

WB~~ 1:1000

**Format**

Rabbit IgG in phosphate buffered saline (without Mg<sup>2+</sup> and Ca<sup>2+</sup>), pH 7.4, 150mM NaCl, 0.09% (W/V) sodium azide and 50% glycerol.

**Storage Conditions**

-20°C

**AGPAT5 Antibody - Protein Information****Name** AGPAT5**Function**

Converts 1-acyl-sn-glycerol-3-phosphate (lysophosphatidic acid or LPA) into 1,2-diacyl-sn-glycerol-3-phosphate (phosphatidic acid or PA) by incorporating an acyl moiety at the sn-2 position of the glycerol backbone (PubMed:[21173190](http://www.uniprot.org/citations/21173190)). Acts on LPA containing saturated or unsaturated fatty acids C15:0-C20:4 at the sn-1 position using C18:1-CoA as the acyl donor (PubMed:[21173190](http://www.uniprot.org/citations/21173190)). Also acts on lysophosphatidylethanolamine using oleoyl-CoA, but not arachidonoyl-CoA, and lysophosphatidylinositol using arachidonoyl-CoA, but not oleoyl-CoA (PubMed:[21173190](http://www.uniprot.org/citations/21173190)). Activity toward lysophosphatidylglycerol not detectable

(PubMed:<a href="http://www.uniprot.org/citations/21173190" target="\_blank">21173190</a>).

#### Cellular Location

Endoplasmic reticulum membrane; Multi-pass membrane protein. Nucleus envelope Mitochondrion

#### Tissue Location

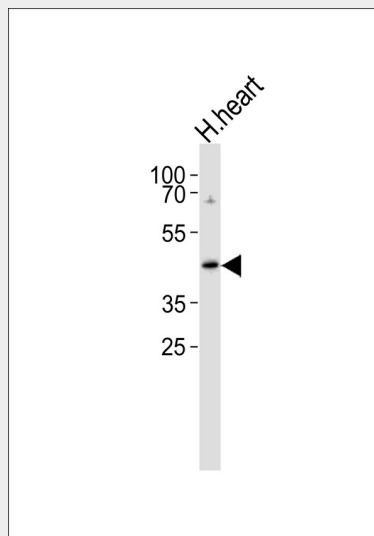
Widely expressed.

### AGPAT5 Antibody - Protocols

Provided below are standard protocols that you may find useful for product applications.

- [Western Blot](#)
- [Blocking Peptides](#)
- [Dot Blot](#)
- [Immunohistochemistry](#)
- [Immunofluorescence](#)
- [Immunoprecipitation](#)
- [Flow Cytometry](#)
- [Cell Culture](#)

### AGPAT5 Antibody - Images



Western blot analysis of lysate from human heart tissue lysate, using AGPAT5 Antibody, was diluted at 1:1000. A goat anti-rabbit IgG H&L(HRP) at 1:5000 dilution was used as the secondary antibody. Lysate at 35ug.

### AGPAT5 Antibody - Background

Converts lysophosphatidic acid (LPA) into phosphatidic acid by incorporating an acyl moiety at the sn-2 position of the glycerol backbone. Acts on LPA containing saturated or unsaturated fatty acids C15:0-C20:4 at the sn-1 position using C18:1-CoA as the acyl donor. Also acts on lysophosphatidylethanolamine using oleoyl-CoA, but not arachidonoyl-CoA, and lysophosphatidylinositol using arachidonoyl-CoA, but not oleoyl-CoA. Activity toward lysophosphatidylglycerol not detectable.

### AGPAT5 Antibody - References

Leung D.W., et al. Submitted (MAY-2001) to the EMBL/GenBank/DDBJ databases.  
Wiemann S., et al. Genome Res. 11:422-435(2001).  
Ota T., et al. Nat. Genet. 36:40-45(2004).  
Agarwal A.K., et al. Arch. Biochem. Biophys. 449:64-76(2006).  
Burkard T.R., et al. BMC Syst. Biol. 5:17-17(2011).