

BCAS4 Antibody
Purified Rabbit Polyclonal Antibody (Pab)
Catalog # AP50826

Specification

BCAS4 Antibody - Product Information

Application	WB, IHC
Primary Accession	Q8TDM0
Reactivity	Human
Host	Rabbit
Clonality	Polyclonal
Calculated MW	23,16,22 KDa
Antigen Region	46-75

BCAS4 Antibody - Additional Information

Gene ID 55653

Other Names

Breast carcinoma-amplified sequence 4, BCAS4

Dilution

WB~~ 1:500-1:1000

IHC~~1:50~100

Format

Rabbit IgG in phosphate buffered saline (without Mg²⁺ and Ca²⁺), pH 7.4, 150mM NaCl, 0.09% (W/V) sodium azide and 50% glycerol.

Storage Conditions

-20°C

BCAS4 Antibody - Protein Information

Name BCAS4

Cellular Location

Cytoplasm.

Tissue Location

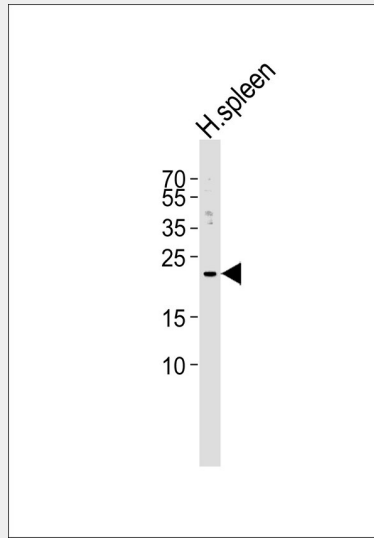
Brain, thymus, spleen, kidney and placenta. Overexpressed in most breast cancer cell lines

BCAS4 Antibody - Protocols

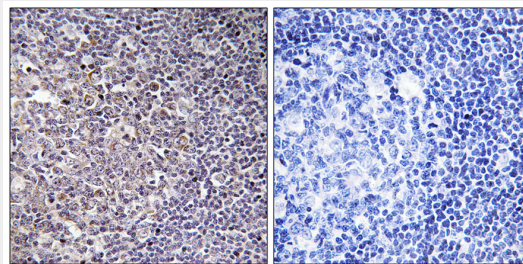
Provided below are standard protocols that you may find useful for product applications.

- [Western Blot](#)
- [Blocking Peptides](#)
- [Dot Blot](#)
- [Immunohistochemistry](#)
- [Immunofluorescence](#)
- [Immunoprecipitation](#)
- [Flow Cytometry](#)
- [Cell Culture](#)

BCAS4 Antibody - Images



Western blot analysis of lysate from human spleen tissue lysate, using BCAS4 Antibody, was diluted at 1:1000. A goat anti-rabbit IgG H&L(HRP) at 1:5000 dilution was used as the secondary antibody. Lysate at 35ug.



Immunohistochemistry analysis of paraffin-embedded human tonsil tissue using BCAS4 antibody.

BCAS4 Antibody - References

- Baerlund M., et al. *Genes Chromosomes Cancer* 35:311-317(2002).
Deloukas P., et al. *Nature* 414:865-871(2001).
Ota T., et al. *Nat. Genet.* 36:40-45(2004).
Bauer M., et al. Submitted (OCT-2002) to the EMBL/GenBank/DDBJ databases.
Van Damme P., et al. *Proc. Natl. Acad. Sci. U.S.A.* 109:12449-12454(2012).