

**IARS2 Antibody**  
**Affinity Purified Rabbit Polyclonal Antibody (Pab)**  
**Catalog # AP50824**

**Specification**

---

**IARS2 Antibody - Product Information**

Application	IF, WB, IHC
Primary Accession	<a href="#">O9NSE4</a>
Reactivity	Human, Mouse
Host	Rabbit
Clonality	Polyclonal
Calculated MW	114 KDa
Antigen Region	85-113

**IARS2 Antibody - Additional Information**

**Gene ID** 55699

**Other Names**

Isoleucine--tRNA ligase, mitochondrial, Isoleucyl-tRNA synthetase, IleRS, IARS2

**Dilution**

IF~~1:100

WB~~ 1:1000

IHC~~1:50~100

**Format**

Rabbit IgG in phosphate buffered saline (without Mg<sup>2+</sup> and Ca<sup>2+</sup>), pH 7.4, 150mM NaCl, 0.09% (W/V) sodium azide and 50% glycerol.

**Storage Conditions**

-20°C

**IARS2 Antibody - Protein Information**

**Name** IARS2 ([HGNC:29685](#))

**Function**

Aminoacyl-tRNA synthetase that catalyzes the specific attachment of isoleucine to its cognate tRNA (tRNA(Ile)).

**Cellular Location**

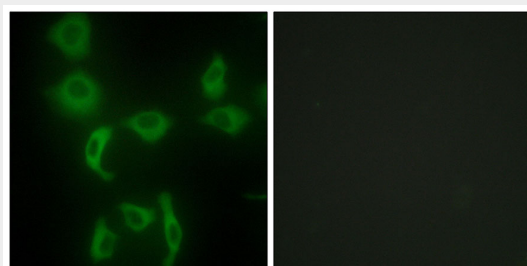
Mitochondrion matrix.

**IARS2 Antibody - Protocols**

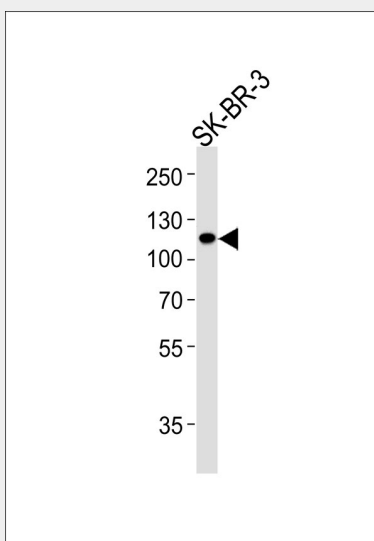
Provided below are standard protocols that you may find useful for product applications.

- [Western Blot](#)
- [Blocking Peptides](#)
- [Dot Blot](#)
- [Immunohistochemistry](#)
- [Immunofluorescence](#)
- [Immunoprecipitation](#)
- [Flow Cytometry](#)
- [Cell Culture](#)

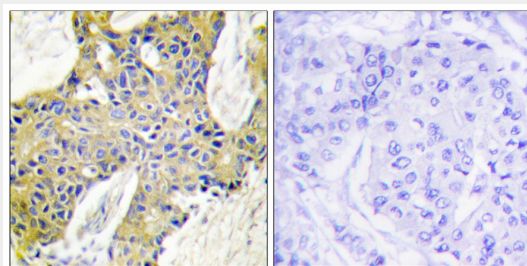
### IARS2 Antibody - Images



Immunofluorescence analysis of HepG2 cells, using IARS2 antibody.



Western blot analysis of lysate from SK-BR-3 cell line, using IARS2 Antibody, was diluted at 1:1000. A goat anti-rabbit IgG H&L(HRP) at 1:5000 dilution was used as the secondary antibody. Lysate at 35ug.



Immunohistochemistry analysis of paraffin-embedded human breast carcinoma tissue using IARS2 antibody.

**IARS2 Antibody - References**

Shan Y.X.,et al.Submitted (APR-2003) to the EMBL/GenBank/DDBJ databases.  
Gregory S.G.,et al.Nature 441:315-321(2006).  
Mural R.J.,et al.Submitted (SEP-2005) to the EMBL/GenBank/DDBJ databases.  
Shiba K.,et al.Submitted (FEB-1994) to the EMBL/GenBank/DDBJ databases.  
Ota T.,et al.Nat. Genet. 36:40-45(2004).