

Cytochrome P450 39A1 Antibody
Purified Rabbit Polyclonal Antibody (Pab)
Catalog # AP50820

Specification

Cytochrome P450 39A1 Antibody - Product Information

Application	WB
Primary Accession	O9NYL5
Reactivity	Human
Host	Rabbit
Clonality	Polyclonal
Calculated MW	54 KDa
Antigen Region	375-402

Cytochrome P450 39A1 Antibody - Additional Information

Gene ID 51302

Other Names

24-hydroxycholesterol 7-alpha-hydroxylase, Cytochrome P450 39A1, hCYP39A1, Oxysterol 7-alpha-hydroxylase, CYP39A1

Dilution

WB~~ 1:1000

Format

Rabbit IgG in phosphate buffered saline (without Mg²⁺ and Ca²⁺), pH 7.4, 150mM NaCl, 0.09% (W/V) sodium azide and 50% glycerol.

Storage Conditions

-20°C

Cytochrome P450 39A1 Antibody - Protein Information

Name CYP39A1 {ECO:0000303|PubMed:25201972, ECO:0000312|HGNC:HGNC:17449}

Function

A cytochrome P450 monooxygenase involved in neural cholesterol clearance through bile acid synthesis (PubMed: [10748047](http://www.uniprot.org/citations/10748047), PubMed: [25201972](http://www.uniprot.org/citations/25201972)). Catalyzes 7-alpha hydroxylation of (24S)- hydroxycholesterol, a neural oxysterol that is metabolized to bile acids in the liver (PubMed: [10748047](http://www.uniprot.org/citations/10748047), PubMed: [25201972](http://www.uniprot.org/citations/25201972)). Mechanistically, uses molecular oxygen inserting one oxygen atom into a substrate, and reducing the second into a water molecule, with two electrons provided by NADPH via cytochrome P450 reductase (CPR; NADPH-ferrihemoprotein reductase) (PubMed: [10748047](http://www.uniprot.org/citations/10748047), PubMed: [25201972](http://www.uniprot.org/citations/25201972)).

href="http://www.uniprot.org/citations/25201972" target="_blank">25201972).

Cellular Location

Endoplasmic reticulum membrane {ECO:0000250|UniProtKB:Q64654}; Multi-pass membrane protein. Microsome membrane {ECO:0000250|UniProtKB:Q64654}; Multi-pass membrane protein

Tissue Location

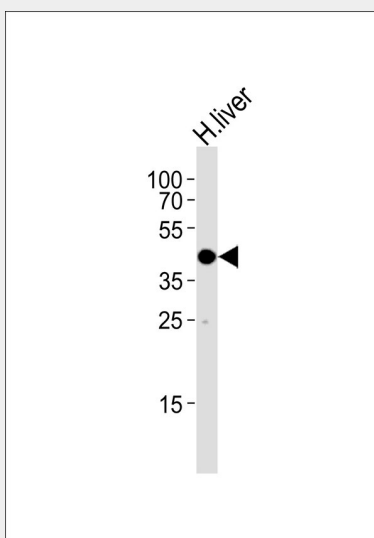
Liver specific..

Cytochrome P450 39A1 Antibody - Protocols

Provided below are standard protocols that you may find useful for product applications.

- [Western Blot](#)
- [Blocking Peptides](#)
- [Dot Blot](#)
- [Immunohistochemistry](#)
- [Immunofluorescence](#)
- [Immunoprecipitation](#)
- [Flow Cytometry](#)
- [Cell Culture](#)

Cytochrome P450 39A1 Antibody - Images



Western blot analysis of lysate from human liver tissue lysate, using Cytochrome P450 39A1 Antibody, was diluted at 1:1000. A goat anti-rabbit IgG H&L(HRP) at 1:5000 dilution was used as the secondary antibody. Lysate at 35ug.

Cytochrome P450 39A1 Antibody - Background

Involved in the bile acid metabolism. Has a preference for 24-hydroxycholesterol, and converts it into a 7-alpha-hydroxylated product.

Cytochrome P450 39A1 Antibody - References

Li-Hawkins J., et al. J. Biol. Chem. 275:16543-16549(2000).
Ota T., et al. Nat. Genet. 36:40-45(2004).

Mungall A.J., et al. Nature 425:805-811(2003).