

**Collagen XXIII  $\alpha$ 1 Antibody**  
**Affinity-Purified Rabbit Polyclonal Antibody (Pab)**  
**Catalog # AP50788**

**Specification**

---

**Collagen XXIII  $\alpha$ 1 Antibody - Product Information**

Application	IF, WB
Primary Accession	<a href="#">Q86Y22</a>
Reactivity	Human, Mouse, Rat
Host	Rabbit
Clonality	Polyclonal
Calculated MW	52,31(R&D,75,60KD) KDa
Antigen Region	473-501

**Collagen XXIII  $\alpha$ 1 Antibody - Additional Information**

**Gene ID** 91522

**Other Names**

Collagen alpha-1(XXIII) chain, COL23A1

**Dilution**

IF~~1:100

WB~~ 1:1000

**Format**

Rabbit IgG in phosphate buffered saline (without Mg<sup>2+</sup> and Ca<sup>2+</sup>), pH 7.4, 150mM NaCl, 0.09% (W/V) sodium azide and 50% glycerol.

**Storage Conditions**

-20°C

**Collagen XXIII  $\alpha$ 1 Antibody - Protein Information**

**Name** COL23A1

**Cellular Location**

Cell membrane; Single-pass type II membrane protein; Extracellular side

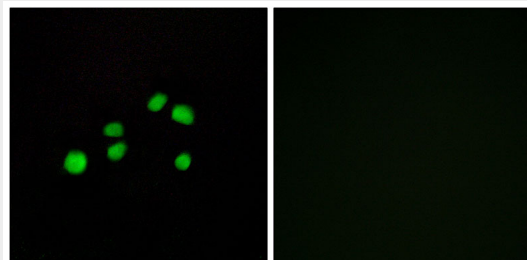
**Collagen XXIII  $\alpha$ 1 Antibody - Protocols**

Provided below are standard protocols that you may find useful for product applications.

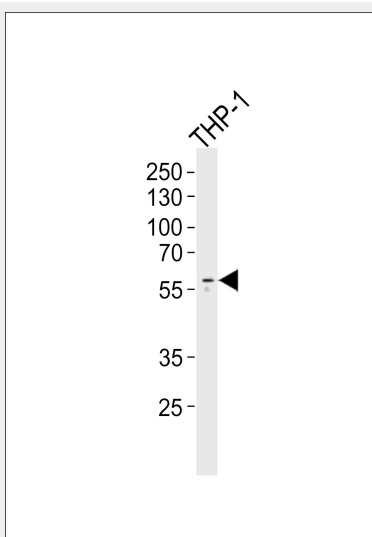
- [Western Blot](#)
- [Blocking Peptides](#)
- [Dot Blot](#)

- [Immunohistochemistry](#)
- [Immunofluorescence](#)
- [Immunoprecipitation](#)
- [Flow Cytometry](#)
- [Cell Culture](#)

### Collagen XXIII $\alpha$ 1 Antibody - Images



Immunofluorescence analysis of HepG2 cells, using Collagen XXIII  $\alpha$ 1 antibody.



Western blot analysis of lysate from THP-1 cell line, using Collagen XXIII  $\alpha$ 1 Antibody (AP50788). AP50788 was diluted at 1:1000. A goat anti-rabbit IgG H&L (HRP) at 1:5000 dilution was used as the secondary antibody. Lysate at 35  $\mu$ g.

### Collagen XXIII $\alpha$ 1 Antibody - References

- Banyard J., et al. *J. Biol. Chem.* 278:20989-20994(2003).  
Koch M., et al. Submitted (JAN-2005) to the EMBL/GenBank/DDBJ databases.  
Bechtel S., et al. *BMC Genomics* 8:399-399(2007).