

Tubulin α Antibody
Purified Rabbit Polyclonal Antibody (Pab)
Catalog # AP50786**Specification**

Tubulin α Antibody - Product Information

Application	IF, WB, IHC
Primary Accession	O71U36
Other Accession	P68363
Reactivity	Human, Mouse, Rat
Host	Rabbit
Clonality	Polyclonal
Calculated MW	50,46 KDa
Antigen Region	423-451

Tubulin α Antibody - Additional Information**Gene ID** 7846**Other Names**

Tubulin alpha-1A chain, Alpha-tubulin 3, Tubulin B-alpha-1, Tubulin alpha-3 chain, TUBA1A, TUBA3

Dilution

IF~~1:100

WB~~ 1:1000

IHC~~1:50~100

FormatRabbit IgG in phosphate buffered saline (without Mg²⁺ and Ca²⁺), pH 7.4, 150mM NaCl, 0.09% (W/V) sodium azide and 50% glycerol.**Storage Conditions**

-20°C

Tubulin α Antibody - Protein Information**Name** TUBA1A**Synonyms** TUBA3**Function**

Tubulin is the major constituent of microtubules, a cylinder consisting of laterally associated linear protofilaments composed of alpha- and beta-tubulin heterodimers. Microtubules grow by the addition of GTP-tubulin dimers to the microtubule end, where a stabilizing cap forms. Below the cap, tubulin dimers are in GDP-bound state, owing to GTPase activity of alpha-tubulin.

Cellular Location

Cytoplasm, cytoskeleton. Cytoplasm, cytoskeleton, flagellum axoneme

{ECO:0000250|UniProtKB:P68369}

Tissue Location

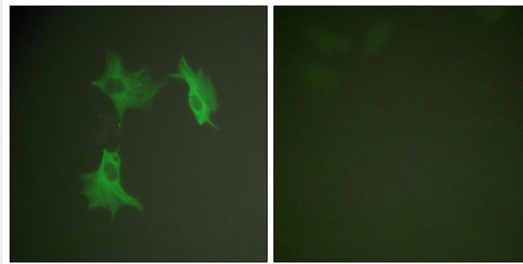
Expressed at a high level in fetal brain.

Tubulin α Antibody - Protocols

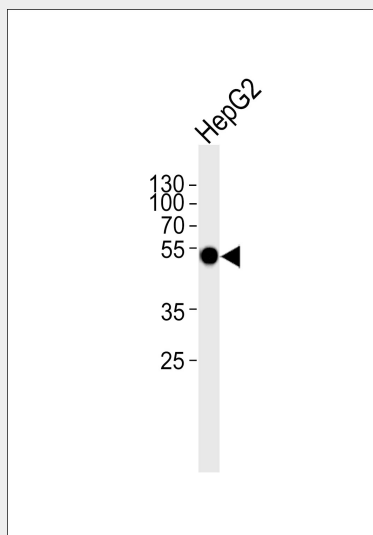
Provided below are standard protocols that you may find useful for product applications.

- [Western Blot](#)
- [Blocking Peptides](#)
- [Dot Blot](#)
- [Immunohistochemistry](#)
- [Immunofluorescence](#)
- [Immunoprecipitation](#)
- [Flow Cytometry](#)
- [Cell Culture](#)

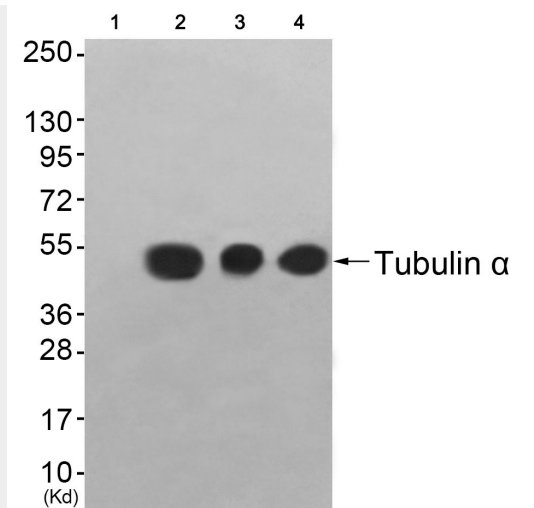
Tubulin α Antibody - Images



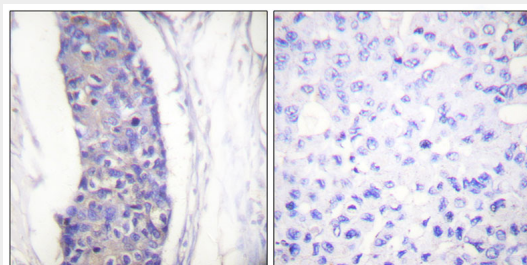
Immunofluorescence analysis of NIH/3T3 cells, using Tubulin α antibody.



Western blot analysis of lysate from HepG2 cell line, using Tubulin α Antibody (AP50786). AP50786 was diluted at 1:1000. A goat anti-rabbit IgG H&L (HRP) at 1:5000 dilution was used as the secondary antibody. Lysate at 35 μ g.



Western blot analysis of extracts from 3T3 cells (Lane 2), colo cells (Lane 3) and HuvEc cells (Lane 4), using Tubulin α Antibody. The lane on the left is treated with synthesized peptide



Immunohistochemistry analysis of paraffin-embedded human breast carcinoma tissue using Tubulin α antibody.

Tubulin α Antibody - Background

Tubulin is the major constituent of microtubules. It binds two moles of GTP, one at an exchangeable site on the beta chain and one at a non-exchangeable site on the alpha chain.

Tubulin α Antibody - References

- Hall J.L., et al. *Nucleic Acids Res.* 13:207-223(1985).
- Crabtree D.V., et al. *Bioorg. Med. Chem.* 9:1967-1976(2001).
- Ota T., et al. *Nat. Genet.* 36:40-45(2004).
- Scherer S.E., et al. *Nature* 440:346-351(2006).
- Mural R.J., et al. Submitted (JUL-2005) to the EMBL/GenBank/DDBJ databases.