

TEAD2 Antibody
Purified Rabbit Polyclonal Antibody (Pab)
Catalog # AP50779**Specification**

TEAD2 Antibody - Product Information

Application	IF, WB, IHC
Primary Accession	Q15562
Reactivity	Human, Mouse
Host	Rabbit
Clonality	Polyclonal
Calculated MW	49,50,35 KDa
Antigen Region	112-139

TEAD2 Antibody - Additional Information**Gene ID** 8463**Other Names**

Transcriptional enhancer factor TEF-4, TEA domain family member 2, TEAD-2, TEAD2, TEF4

Dilution

IF~~1:100

WB~~ 1:1000

IHC~~1:50-100

FormatRabbit IgG in phosphate buffered saline (without Mg²⁺ and Ca²⁺), pH 7.4, 150mM NaCl, 0.09% (W/V) sodium azide and 50% glycerol.**Storage Conditions**

-20°C

TEAD2 Antibody - Protein Information**Name** TEAD2**Synonyms** TEF4**Function**

Transcription factor which plays a key role in the Hippo signaling pathway, a pathway involved in organ size control and tumor suppression by restricting proliferation and promoting apoptosis. The core of this pathway is composed of a kinase cascade wherein MST1/MST2, in complex with its regulatory protein SAV1, phosphorylates and activates LATS1/2 in complex with its regulatory protein MOB1, which in turn phosphorylates and inactivates YAP1 oncoprotein and WWTR1/TAZ. Acts by mediating gene expression of YAP1 and WWTR1/TAZ, thereby regulating cell proliferation, migration and epithelial mesenchymal transition (EMT) induction. Binds to the SPH and GT-IIC 'enhansons' (5'-GTGGAATGT-3'). May be involved in the gene regulation of neural development.

Binds to the M-CAT motif.

Cellular Location

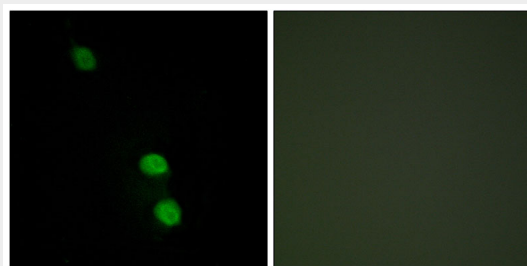
Nucleus.

TEAD2 Antibody - Protocols

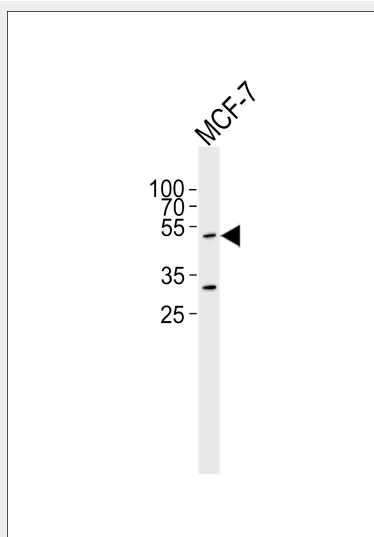
Provided below are standard protocols that you may find useful for product applications.

- [Western Blot](#)
- [Blocking Peptides](#)
- [Dot Blot](#)
- [Immunohistochemistry](#)
- [Immunofluorescence](#)
- [Immunoprecipitation](#)
- [Flow Cytometry](#)
- [Cell Culture](#)

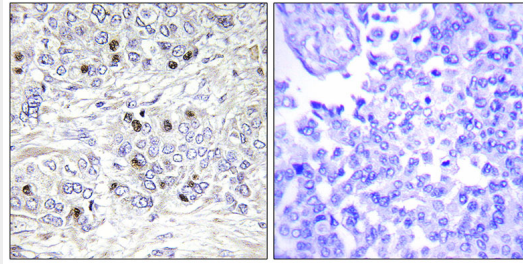
TEAD2 Antibody - Images



Immunofluorescence analysis of HepG2 cells, using TEAD2 antibody.



Western blot analysis of lysate from MCF-7 cell line, using TEAD2 Antibody (AP50779). AP50779 was diluted at 1:1000. A goat anti-rabbit IgG H&L (HRP) at 1:5000 dilution was used as the secondary antibody. Lysate at 35ug.



Immunohistochemistry analysis of paraffin-embedded human breast carcinoma tissue, using TEAD2 antibody.

TEAD2 Antibody - Background

Transcription factor which plays a key role in the Hippo signaling pathway, a pathway involved in organ size control and tumor suppression by restricting proliferation and promoting apoptosis. The core of this pathway is composed of a kinase cascade wherein MST1/MST2, in complex with its regulatory protein SAV1, phosphorylates and activates LATS1/2 in complex with its regulatory protein MOB1, which in turn phosphorylates and inactivates YAP1 oncoprotein and WWTR1/TAZ. Acts by mediating gene expression of YAP1 and WWTR1/TAZ, thereby regulating cell proliferation, migration and epithelial mesenchymal transition (EMT) induction. Binds to the SPH and GT-IIC 'enhancers' (5'- GTGGAATGT-3'). May be involved in the gene regulation of neural development. Binds to the M-CAT motif.

TEAD2 Antibody - References

- Ota T.,et al.Nat. Genet. 36:40-45(2004).
- Grimwood J.,et al.Nature 428:529-535(2004).
- Mural R.J.,et al.Submitted (JUL-2005) to the EMBL/GenBank/DDBJ databases.
- Jacquemin P.,et al.J. Biol. Chem. 271:21775-21785(1996).
- Zhao B.,et al.Genes Dev. 22:1962-1971(2008).