

NOLC1 Antibody
Purified Rabbit Polyclonal Antibody (Pab)
Catalog # AP50770

Specification

NOLC1 Antibody - Product Information

Application	WB
Primary Accession	Q14978
Reactivity	Human, Mouse, Rat
Host	Rabbit
Clonality	Polyclonal
Calculated MW	74,75(140KD) KDa
Antigen Region	652-681

NOLC1 Antibody - Additional Information

Gene ID 9221

Other Names

Nucleolar and coiled-body phosphoprotein 1, 140 kDa nucleolar phosphoprotein, Nopp140, Hepatitis C virus NS5A-transactivated protein 13, HCV NS5A-transactivated protein 13, Nucleolar 130 kDa protein, Nucleolar phosphoprotein p130, NOLC1, KIAA0035, NS5ATP13

Dilution

WB~~ 1:1000

Format

Rabbit IgG in phosphate buffered saline (without Mg²⁺ and Ca²⁺), pH 7.4, 150mM NaCl, 0.09% (W/V) sodium azide and 50% glycerol.

Storage Conditions

-20°C

NOLC1 Antibody - Protein Information

Name NOLC1 ([HGNC:15608](#))

Function

Nucleolar protein that acts as a regulator of RNA polymerase I by connecting RNA polymerase I with enzymes responsible for ribosomal processing and modification (PubMed: [10567578](http://www.uniprot.org/citations/10567578), PubMed: [26399832](http://www.uniprot.org/citations/26399832)). Required for neural crest specification: following monoubiquitination by the BCR(KBTBD8) complex, associates with TCOF1 and acts as a platform to connect RNA polymerase I with enzymes responsible for ribosomal processing and modification, leading to remodel the translational program of differentiating cells in favor of neural crest specification (PubMed: [26399832](http://www.uniprot.org/citations/26399832)). Involved in nucleogenesis, possibly by playing a role in the maintenance of the fundamental structure of the

fibrillar center and dense fibrillar component in the nucleolus (PubMed:9016786). It has intrinsic GTPase and ATPase activities (PubMed:9016786).

Cellular Location

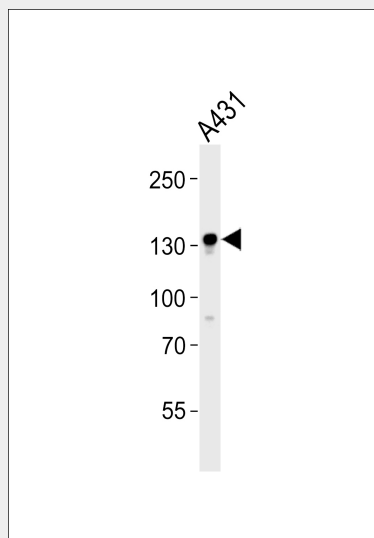
Nucleus, nucleolus. Cytoplasm. Note=Shuttles between the nucleolus and the cytoplasm. At telophase it begins to assemble into granular-like pre-nucleolar bodies which are subsequently relocated to nucleoli at the early G1-phase.

NOLC1 Antibody - Protocols

Provided below are standard protocols that you may find useful for product applications.

- [Western Blot](#)
- [Blocking Peptides](#)
- [Dot Blot](#)
- [Immunohistochemistry](#)
- [Immunofluorescence](#)
- [Immunoprecipitation](#)
- [Flow Cytometry](#)
- [Cell Culture](#)

NOLC1 Antibody - Images



Western blot analysis of lysate from A431 cell line, using NOLC1 Antibody (AP50770). AP50770 was diluted at 1:1000. A goat anti-rabbit IgG H&L (HRP) at 1:5000 dilution was used as the secondary antibody. Lysate at 35 µg.

NOLC1 Antibody - Background

Related to nucleologenesis, may play a role in the maintenance of the fundamental structure of the fibrillar center and dense fibrillar component in the nucleolus. It has intrinsic GTPase and ATPase activities. May play an important role in transcription catalyzed by RNA polymerase I.

NOLC1 Antibody - References

Pai C.-Y.,et al.J. Cell Sci. 108:1911-1920(1995).

Ying Z.L.,et al.Submitted (NOV-2004) to the EMBL/GenBank/DDBJ databases.

Deloukas P.,et al.Nature 429:375-381(2004).

Mural R.J.,et al.Submitted (SEP-2005) to the EMBL/GenBank/DDBJ databases.

Nomura N.,et al.DNA Res. 1:27-35(1994).