

**C14orf49 Antibody**  
**Purified Rabbit Polyclonal Antibody (Pab)**  
**Catalog # AP50768**

**Specification**

---

**C14orf49 Antibody - Product Information**

Application	WB
Primary Accession	<a href="#">O6ZMZ3</a>
Reactivity	Human, Mouse
Host	Rabbit
Clonality	Polyclonal
Calculated MW	112,69 KDa
Antigen Region	180-209

**C14orf49 Antibody - Additional Information**

**Gene ID** 161176

**Other Names**

Nesprin-3, Nuclear envelope spectrin repeat protein 3, SYNE3, C14orf49

**Dilution**

WB~~ 1:1000

**Format**

Rabbit IgG in phosphate buffered saline (without Mg<sup>2+</sup> and Ca<sup>2+</sup>), pH 7.4, 150mM NaCl, 0.09% (W/V) sodium azide and 50% glycerol.

**Storage Conditions**

-20°C

**C14orf49 Antibody - Protein Information**

**Name** SYNE3 ([HGNC:19861](#))

**Function**

As a component of the LINC (Linker of Nucleoskeleton and Cytoskeleton) complex involved in the connection between the nuclear lamina and the cytoskeleton. The nucleocytoplasmic interactions established by the LINC complex play an important role in the transmission of mechanical forces across the nuclear envelope and in nuclear movement and positioning. Probable anchoring protein which tethers the nucleus to the cytoskeleton by binding PLEC which can associate with the intermediate filament system. Plays a role in the regulation of aortic epithelial cell morphology, and is required for flow-induced centrosome polarization and directional migration in aortic endothelial cells.

**Cellular Location**

Nucleus outer membrane; Single-pass type IV membrane protein. Nucleus envelope. Rough endoplasmic reticulum

### Tissue Location

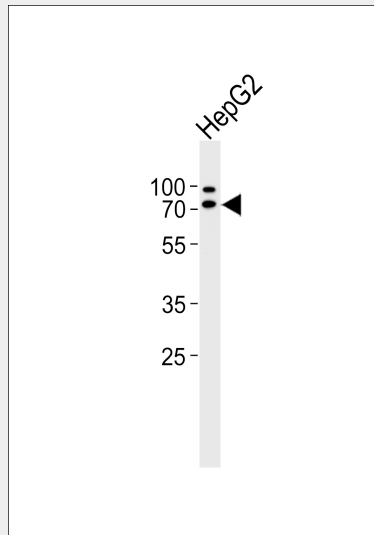
Expressed in aortic endothelial cells (at protein level).

### C14orf49 Antibody - Protocols

Provided below are standard protocols that you may find useful for product applications.

- [Western Blot](#)
- [Blocking Peptides](#)
- [Dot Blot](#)
- [Immunohistochemistry](#)
- [Immunofluorescence](#)
- [Immunoprecipitation](#)
- [Flow Cytometry](#)
- [Cell Culture](#)

### C14orf49 Antibody - Images



Western blot analysis of lysate from HepG2 cell line, using C14orf49 Antibody (AP50768). AP50768 was diluted at 1:1000. A goat anti-rabbit IgG H&L (HRP) at 1:5000 dilution was used as the secondary antibody. Lysate at 35 µg.

### C14orf49 Antibody - Background

Component of SUN-protein-containing multivariate complexes also called LINC complexes which link the nucleoskeleton and cytoskeleton by providing versatile outer nuclear membrane attachment sites for cytoskeletal filaments. Involved in the maintenance of nuclear organization and structural integrity. Probable anchoring protein which tethers the nucleus to the cytoskeleton by binding PLEC which can associate with the intermediate filament system. Plays a role in the regulation of aortic epithelial cell morphology, and is required for flow-induced centrosome polarization and directional migration in aortic endothelial cells.

### C14orf49 Antibody - References

Li W.B., et al. Submitted (FEB-2003) to the EMBL/GenBank/DDBJ databases.  
Heilig R., et al. Nature 421:601-607 (2003).  
Ota T., et al. Nat. Genet. 36:40-45 (2004).

Wilhelmsen K.,et al.J. Cell Biol. 171:799-810(2005).  
Stewart-Hutchinson P.J.,et al.Exp. Cell Res. 314:1892-1905(2008).