

CDCA2 Antibody
Purified Rabbit Polyclonal Antibody (Pab)
Catalog # AP50761**Specification**

CDCA2 Antibody - Product Information

Application	WB
Primary Accession	Q69YH5
Reactivity	Human
Host	Rabbit
Clonality	Polyclonal
Calculated MW	113,7 KDa
Antigen Region	520-551

CDCA2 Antibody - Additional Information**Gene ID** 157313**Other Names**

Cell division cycle-associated protein 2, Recruits PP1 onto mitotic chromatin at anaphase protein, Repo-Man, CDCA2

Dilution

WB~~ 1:1000

FormatRabbit IgG in phosphate buffered saline (without Mg²⁺ and Ca²⁺), pH 7.4, 150mM NaCl, 0.09% (W/V) sodium azide and 50% glycerol.**Storage Conditions**

-20°C

CDCA2 Antibody - Protein Information**Name** CDCA2**Function**

Regulator of chromosome structure during mitosis required for condensin-depleted chromosomes to retain their compact architecture through anaphase. Acts by mediating the recruitment of phosphatase PP1-gamma subunit (PPP1CC) to chromatin at anaphase and into the following interphase. At anaphase onset, its association with chromatin targets a pool of PPP1CC to dephosphorylate substrates.

Cellular Location

Nucleus. Note=Excluded from the nucleolus. Present in nucleoplasm throughout the G1, S and G2 stages of the cell cycle. During M phase, it becomes diffuse throughout the cell as the nuclear membrane breaks down, and faintly accumulates later on metaphase chromatin. As the cell progresses to anaphase, it accumulates on chromatin

Tissue Location

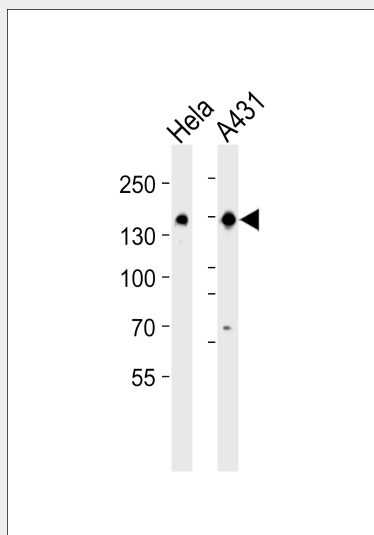
Ubiquitously expressed.

CDCA2 Antibody - Protocols

Provided below are standard protocols that you may find useful for product applications.

- [Western Blot](#)
- [Blocking Peptides](#)
- [Dot Blot](#)
- [Immunohistochemistry](#)
- [Immunofluorescence](#)
- [Immunoprecipitation](#)
- [Flow Cytometry](#)
- [Cell Culture](#)

CDCA2 Antibody - Images



Western blot analysis of lysates from HeLa, A431 cell line (from left to right), using CDCA2 Antibody (AP50761). AP50761 was diluted at 1:1000 at each lane. A goat anti-rabbit IgG H&L (HRP) at 1:5000 dilution was used as the secondary antibody. Lysates at 35 µg per lane.

CDCA2 Antibody - Background

Regulator of chromosome structure during mitosis required for condensin-depleted chromosomes to retain their compact architecture through anaphase. Acts by mediating the recruitment of phosphatase PP1-gamma subunit (PPP1CC) to chromatin at anaphase and into the following interphase. At anaphase onset, its association with chromatin targets a pool of PPP1CC to dephosphorylate substrates.

CDCA2 Antibody - References

- Bechtel S., et al. BMC Genomics 8:399-399(2007).
Nusbaum C., et al. Nature 439:331-335(2006).
Walker M.G., et al. Curr. Cancer Drug Targets 1:73-83(2001).
Ota T., et al. Nat. Genet. 36:40-45(2004).
Olsen J.V., et al. Cell 127:635-648(2006).

