

MRPS22 Antibody
Affinity Purified Rabbit Polyclonal Antibody (Pab)
Catalog # AP50756

Specification

MRPS22 Antibody - Product Information

Application	IF, WB
Primary Accession	P82650
Reactivity	Human
Host	Rabbit
Clonality	Polyclonal
Calculated MW	41 KDa
Antigen Region	238-267

MRPS22 Antibody - Additional Information

Gene ID 56945

Other Names

28S ribosomal protein S22, mitochondrial, MRP-S22, S22mt, MRPS22, C3orf5, RPMS22

Dilution

IF~~1:100

WB~~1:1000

Format

Rabbit IgG in phosphate buffered saline (without Mg²⁺ and Ca²⁺), pH 7.4, 150mM NaCl, 0.09% (W/V) sodium azide and 50% glycerol.

Storage Conditions

-20°C

MRPS22 Antibody - Protein Information

Name MRPS22

Synonyms C3orf5, RPMS22

Cellular Location

Mitochondrion.

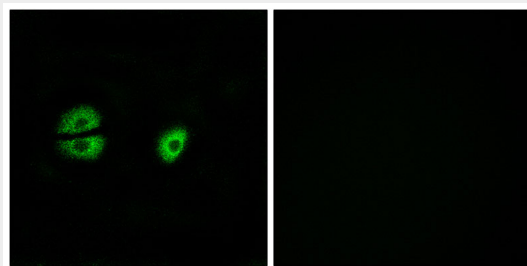
MRPS22 Antibody - Protocols

Provided below are standard protocols that you may find useful for product applications.

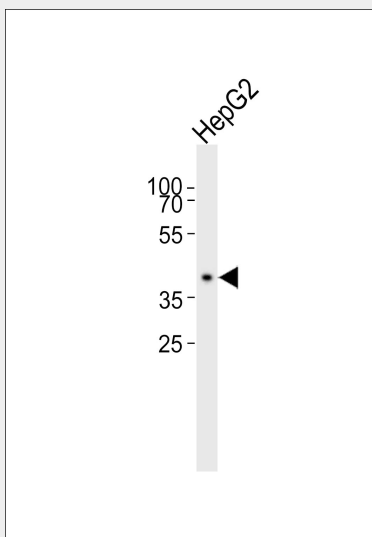
- [Western Blot](#)

- [Blocking Peptides](#)
- [Dot Blot](#)
- [Immunohistochemistry](#)
- [Immunofluorescence](#)
- [Immunoprecipitation](#)
- [Flow Cytometry](#)
- [Cell Culture](#)

MRPS22 Antibody - Images



Immunofluorescence analysis of A549 cells, using MRPS22 antibody.



Western blot analysis of lysate from HepG2 cell line, using MRPS22 Antibody (AP50756). AP50756 was diluted at 1:1000. A goat anti-rabbit IgG H&L (HRP) at 1:5000 dilution was used as the secondary antibody. Lysate at 35ug.

MRPS22 Antibody - References

- Crisponi L., et al. *Nat. Genet.* 27:159-166(2001).
Li Y., et al. Submitted (JAN-2000) to the EMBL/GenBank/DDBJ databases.
Koc E.C., et al. *J. Biol. Chem.* 275:32585-32591(2000).
Choudhary C., et al. *Science* 325:834-840(2009).
Burkard T.R., et al. *BMC Syst. Biol.* 5:17-17(2011).