

**YAF2 Antibody**  
**Purified Rabbit Polyclonal Antibody (Pab)**  
**Catalog # AP50725**

**Specification**

---

**YAF2 Antibody - Product Information**

Application	<b>WB</b>
Primary Accession	<a href="#">Q8IY57</a>
Reactivity	<b>Human</b>
Host	<b>Rabbit</b>
Clonality	<b>Polyclonal</b>
Calculated MW	<b>20,17,15,13 KDa</b>
Antigen Region	<b>1-61</b>

**YAF2 Antibody - Additional Information**

**Gene ID** 10138

**Other Names**

YY1-associated factor 2, YAF2

**Dilution**

WB~~ 1:500

**Storage**

Store at -20 °C. Stable for 12 months from date of receipt

**YAF2 Antibody - Protein Information**

**Name** YAF2

**Function**

Binds to MYC and inhibits MYC-mediated transactivation. Also binds to MYCN and enhances MYCN-dependent transcriptional activation. Increases calpain 2-mediated proteolysis of YY1 in vitro. Component of the E2F6.com-1 complex, a repressive complex that methylates 'Lys-9' of histone H3, suggesting that it is involved in chromatin-remodeling.

**Cellular Location**

Nucleus.

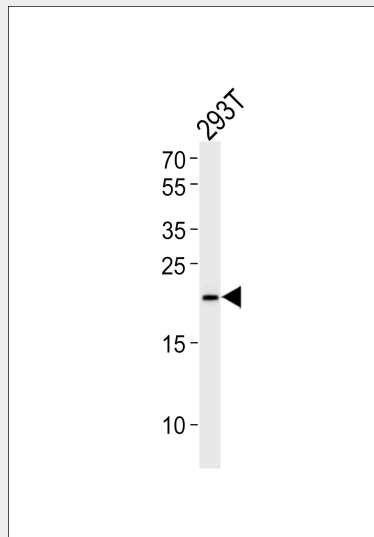
**YAF2 Antibody - Protocols**

Provided below are standard protocols that you may find useful for product applications.

- [Western Blot](#)
- [Blocking Peptides](#)

- [Dot Blot](#)
- [Immunohistochemistry](#)
- [Immunofluorescence](#)
- [Immunoprecipitation](#)
- [Flow Cytometry](#)
- [Cell Culture](#)

### YAF2 Antibody - Images



Western blot analysis of lysate from 293T cell line, using YAF2 Antibody was diluted at 1:500. A goat anti-rabbit IgG H&L(HRP) at 1:5000 dilution was used as the secondary antibody. Lysate at 35ug.

### YAF2 Antibody - Background

Binds to MYC and inhibits MYC-mediated transactivation. Also binds to MYCN and enhances MYCN-dependent transcriptional activation. Increases calpain 2-mediated proteolysis of YY1 in vitro. Component of the E2F6.com-1 complex, a repressive complex that methylates 'Lys-9' of histone H3, suggesting that it is involved in chromatin-remodeling.

### YAF2 Antibody - References

- Kalenik J.L., et al. *Nucleic Acids Res.* 25:843-849(1997).  
Ota T., et al. *Nat. Genet.* 36:40-45(2004).  
Scherer S.E., et al. *Nature* 440:346-351(2006).  
Mural R.J., et al. Submitted (JUL-2005) to the EMBL/GenBank/DDBJ databases.  
Bannasch D., et al. *Oncogene* 20:5913-5919(2001).