

RALB Antibody
Purified Rabbit Polyclonal Antibody (Pab)
Catalog # AP50724**Specification**

RALB Antibody - Product Information

Application	WB
Primary Accession	P11234
Reactivity	Human, Mouse, Rat
Host	Rabbit
Clonality	Polyclonal
Calculated MW	23 KDa
Antigen Region	108-168

RALB Antibody - Additional Information**Gene ID** 5899**Other Names**

Ras-related protein Ral-B, RALB

Dilution

WB~~ 1:1000

Storage

Store at -20 °C. Stable for 12 months from date of receipt

RALB Antibody - Protein Information**Name** RALB**Function**

Multifunctional GTPase involved in a variety of cellular processes including gene expression, cell migration, cell proliferation, oncogenic transformation and membrane trafficking (PubMed: [10393179](http://www.uniprot.org/citations/10393179), PubMed: [17875936](http://www.uniprot.org/citations/17875936), PubMed: [18756269](http://www.uniprot.org/citations/18756269)).

Accomplishes its multiple functions by interacting with distinct downstream effectors. Acts as a GTP sensor for GTP-dependent exocytosis of dense core vesicles (By similarity). Required both to stabilize the assembly of the exocyst complex and to localize functional exocyst complexes to the leading edge of migrating cells (By similarity). Required for suppression of apoptosis (PubMed: [17875936](http://www.uniprot.org/citations/17875936)). In late stages of cytokinesis, upon completion of the bridge formation between dividing cells, mediates exocyst recruitment to the midbody to drive abscission (PubMed: [18756269](http://www.uniprot.org/citations/18756269)). Involved in ligand-dependent receptor mediated endocytosis of the EGF and insulin receptors (PubMed: [10393179](http://www.uniprot.org/citations/10393179)).

Cellular Location

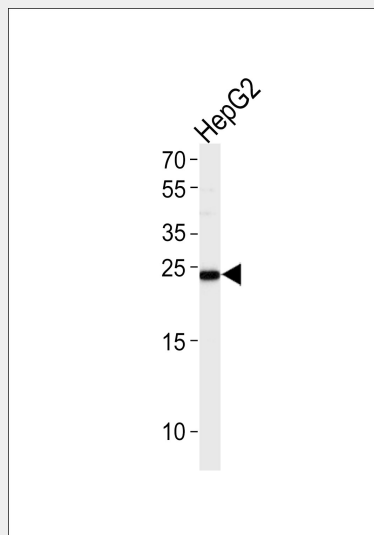
Cell membrane; Lipid-anchor; Cytoplasmic side. Midbody Note=During late cytokinesis, enriched at the midbody

RALB Antibody - Protocols

Provided below are standard protocols that you may find useful for product applications.

- [Western Blot](#)
- [Blocking Peptides](#)
- [Dot Blot](#)
- [Immunohistochemistry](#)
- [Immunofluorescence](#)
- [Immunoprecipitation](#)
- [Flow Cytometry](#)
- [Cell Culture](#)

RALB Antibody - Images



Western blot analysis of lysate from HepG2 cell line, using RALB Antibody was diluted at 1:1000. A goat anti-rabbit IgG H&L(HRP) at 1:5000 dilution was used as the secondary antibody. Lysate at 35ug.

RALB Antibody - Background

Multifunctional GTPase involved in a variety of cellular processes including gene expression, cell migration, cell proliferation, oncogenic transformation and membrane trafficking. Accomplishes its multiple functions by interacting with distinct downstream effectors. Acts as a GTP sensor for GTP-dependent exocytosis of dense core vesicles. Required both to stabilize the assembly of the exocyst complex and to localize functional exocyst complexes to the leading edge of migrating cells. Plays a role in the late stages of cytokinesis and is required for the abscission of the bridge joining the sister cells emerging from mitosis. Required for suppression of apoptosis.

RALB Antibody - References

Chardin P., et al. Nucleic Acids Res. 17:4380-4380(1989).
Hsieh C.-L., et al. Somat. Cell Mol. Genet. 16:407-410(1990).

Puhl H.L. III, et al. Submitted (MAR-2002) to the EMBL/GenBank/DDBJ databases.
Kalnine N., et al. Submitted (MAY-2003) to the EMBL/GenBank/DDBJ databases.
Ota T., et al. Nat. Genet. 36:40-45(2004).